



**NEW**

# Innovative

*Ophthalmic Devices*

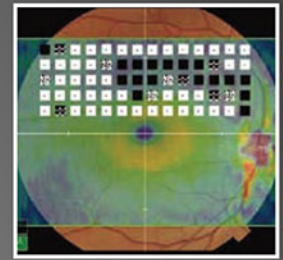
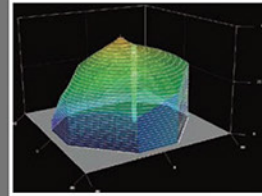
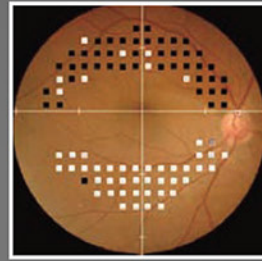
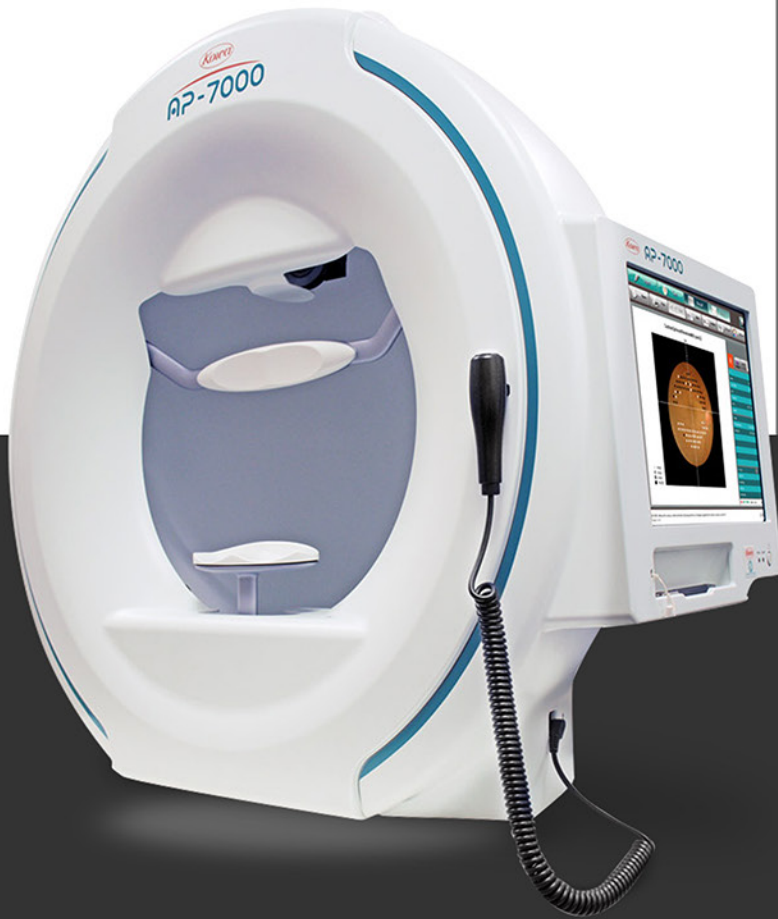
# *Kowa*



2023 *Catalog*



Database of Normal Eyes



Kinetic Perimetry

# Model AP-7000 Perimeter

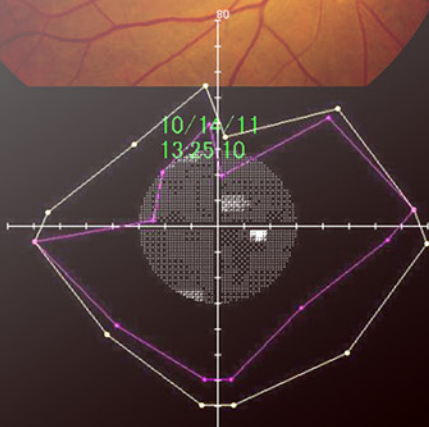
> Not Sold in the U.S.A



Fundus Oriented Perimetry

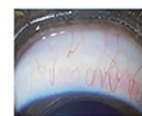
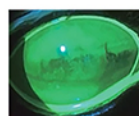
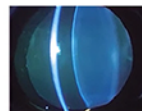
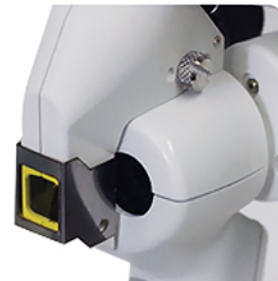
1001

22/22



KOWA Computerized Perimetry AP-7000 offers a full threshold modes offer macular, central, and peripheral coverage up to 80°, while screening modes provide swift evaluation of the visual field. Automatically recognizes any fixation losses and adjusts patients accordingly until optimal test conditions are achieved.

- Consistent & reliable assessments
- Versatility of test requirements
- Advanced analysis
- Fits perfectly within the practice
- Results comparable with other perimeters
- Efficient & easy operation
- Enhanced patient experience
- Ergonomic design
- Advance workflow
- English, French, Germany, Italian, Portuguese & Spanish



*Model*  
**SL-19**  
*Portable Slit Lamp*

> Not Sold in the U.S.A

The ergonomic KOWA Portable Slit Lamp SL-19 is a hand held device with high illuminance white LED, two magnification eyepieces and a two hour battery for continuous operation.

- Set of 10x and 16x Eyepieces
- Diopter Adjustment Level
- High luminance: white LED
- Rechargeable AAA Batteries
- Available in 4 Colors
- Built-in Cobalt Blue Filter
- Easy on/off switch
- Application in a wide range of situations
- 20,000 Lux White LED Light Source
- Anti-Tip Design



*Colors  
Optional*







Carry-On Case - Included



*Model*  
**HA-2**  
*Portable Tonometer*

> Not Sold in the U.S.A



> Specifications:

Type	Hand-held applanation tonometer
Applanation prism	Doubling prism interchangeable (option)
Scale range	0~60 mm Hg (1 mm Hg division)
Illumination	
a) ON/OFF	Interlocked with thumb wheel
b) Bulb	Lens bulb 2.5 V, 0.25 A interchangeable
c) Battery used	1.5 V, 2 pcs Interchangeable
Eyepiece	
Magnification	6 X
Head rest	Movable
Length	290 mm
Weight	240g/0.5lbs

KOMA tonometer is an essential tool used in the global examination of all eye check-ups and specifically for a glaucoma examinations of the patient's ocular health. Requires no conversion table to change the readings or accessories such as adjustable head rest and interchangeable eyepiece

- Built-in LED illumination
- Convenient for daily clinical practice
- Setting block for calibration
- Standard battery power source
- Applanation prism (optional)
- Compact, lightweight and well-balanced
- 1.5V Interchangeable battery-2pcs
- Comfortable to hold and well-balanced
- Magnification 6x
- Refraction to measure glasses or lens correction