

VIEWLIGHT

POWERED BY INNOVATION

Digital
Ready
SLIT LAMPS

CSL-13U

IMAX-5
Digital Camera
(NOT Included)





CSL-13U

Features:

The CSL-13U Slit lamps consists of an LED illumination system and 3X magnification changer intended for eye examination of the anterior eye segment, from the cornea epithelium to the posterior capsule. It is used to aid in the diagnosis of diseases or trauma which affect the structural properties of the anterior eye segment.



3X Magnification:

CSL-13U a classic styling and outstanding galilean optics system, with magnification changers of 10x, 16x, 25x pupil range of 52-82mm, for clear observations.



Product Introduction



Cross Maneuver Joystick:

All Viewlight's slit lamps are built with a precise, smooth and high quality joystick. It provides lateral, longitudinal and vertical movements during all patients examinations.



Built In 5 Filters:

CSL-13U slit lamps examinations provides a stereoscopic magnified view of the eye structures in details with built in five different filters that can be inserted. No Filter, Heat Absorption, Grey (ND) Red Free (Green), and Cobalt Blue.



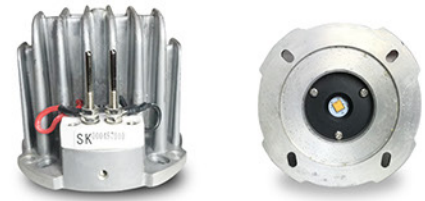
Tonometer: Optional

Viewlight's RU-100 Tonometer can be mounted and installed as an accessory used for measuring ocular pressure and applanation of the corneal surface.

Fixation Lamp
Red LED 3.5V



Digital Camera
IMAX-5
(Optional)

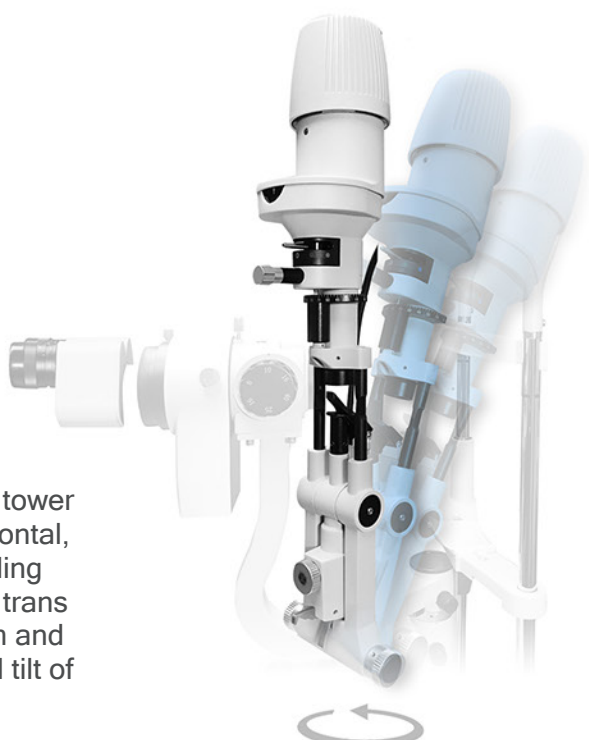


LED Illumination System

CSL-13U LED illumination provides a steady 50,000 hours of working lighting time for observation, and optimum color rendition which allows maximum illumination during the observation.

Slit Angles:

CSL-13U features an illumination tower which allows examination in horizontal, vertical, and oblique section including option to offset the slit for corneal trans illumination. The illumination beam and slit angle of 0-180° & a slit vertical tilt of 5° 10° 15° 20°



Mirror Diffuser:

CSL-13U features a continuous 14mm aperture reading suitable for anterior and posterior segment examinations. Includes a illumination diffuser, where the light is spread evenly over the entire observed surface.



Features:

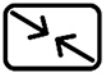
IMAX-5

IMAGING SYSTEM



Compact Size

Widely compatible to different brand model slit lamps.



Compatibility

Light and compact size camera with accurate and intelligent exposure.



Practicle Image Processing

This unique feature can meet most of the operator's demand.



Smart Auto Exposure

Professional solution makes the camera exposure, more accurate and intelligent.



- 5 megapixel resolution
- 1/2.5 inch CMOS
- High definition images & videos



Wireless Button

2.4Hz wireless solution, no aiming, fast reaction, and stable performance. 3V Energizer Battery Not Included



Easy USB Transfer

One Power cable and data line will produce data transmission quickly and easily. Neither hardware nor computer configuring is required.



User-Friendly Interface

Simple design style and friendly interface help operators handle it quickly and efficiently.



Centralized Management

Professional patient information management platform is important to conduct centralized management for patient. This platform supports integrated function print.

Digital Ready
SLIT LAMPS
CSL-13U



- | | | |
|-------------------------------------|-----------------------------------|-------------------------------------|
| 1. Lamp Cap Plug | 8. Magnification Select Dial | 15. Fixation Knob of Chinrest Paper |
| 2. LED Bulb Cover | 9. Illumination Inclination Lever | 16. Chinrest |
| 3. Filter Selection Lever | 10. Slit Width Control Knob | 17. Elevation Adjustment Knob |
| 4. Slit Height Control Knob | 11. Joystick | 18. Base Locking Screw |
| 5. Aperture & Filter Selection Dial | 12. WorkTabletop (Optional) | 19. Microscope Arm Locking Knob |
| 6. Fixing Screw | 13. Brightness Control Switch | 20. Device Base Locking Knob |
| 7. Reflecting Mirror | 14. Fixation Target | 21. Wheel Shields |



Product Specifications

Type:	Galilean system, Parallel type, Haag-Streit type
Magnification Changer:	Rotation Drum Change
Magnification:	10x, 16x, 25x
Eyepiece:	12.5x
Field of View:	6x (φ33) 10x (φ22) 16x (φ14) 25x (φ8.5) 40x (φ5.5)mm
Pupil Range:	52 - 82 mm
Diopter:	±7D

Illumination

Slit Width:	Continuous from 0 to 14 mm
Slit Length:	Continuous from 0 to 14 mm
Slit Angle:	0° - 180°
Slit Aperture:	Continuous from 1 - 14 mm, φ14, 10, 5, 3, 1, 0.2 mm
Slit Vertical Tilt:	5° 10° 15° 20°
Filter:	Heat Absorption, Grey, Redfree, Cobalt Blue
Fixation Lamp:	Red LED 3.5V
Light Resource:	LED

Power Sources

Input Voltage:	100 - 240V 48 - 62Hz
Input Power:	70VA

Dimensions and Weight

Dimensions:	740*640*450 mm
Net Weight:	21kg
Gross Weight:	24kg

