



***Inami***

MADE  JAPAN

**Catalog**



MADE  JAPAN



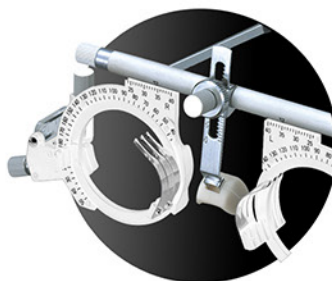
*LED & Halogen*  
SLIT LAMPS

PG. 3-14



*Operation & Portable*  
MICROSCOPES

PG.15-31



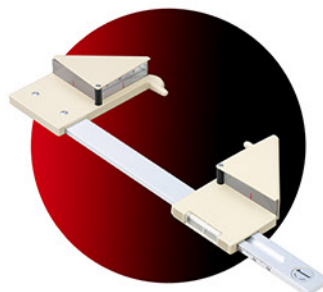
*K-0391*  
TRIAL FRAMES

PG. 32-35



*L-7040*  
VISION TESTER

PG. 36-39



*K-0161*  
EXOPHTHALMETER

PG. 40-42



*INAMI - Optional*  
ACCESSORIES

PG. 43-54



# Inami

*Halogen & LED Series*  
**SLIT LAMPS**



Halogen & LED Series  
**L-0185**

**Greenough Type**  
Stereoscopic Microscope



Halogen & LED Series  
**L-0187**

**Convergent Type**  
Binocular Microscope



Halogen & LED Series  
**L-0189**

**Convergent Type**  
Binocular Microscope



Halogen & LED Series  
**L-0240**

**Convergent Type**  
Binocular Microscope



Halogen & LED Series  
**L-0229-E**

**Convergent Type**  
Binocular Microscope







# Inami

## Slit Lamp Magnifications Technology

The ergonomic design of Inami Digital Slit Lamps, provides a clear and detailed illumination for all patients eye. This device offers both a greenough type stereoscopic microscope and a convergent type binocular microscope, a 2-5 step magnification and ZOOM continuous monitoring screening for fine quality observations.

	Standard / Option	L-0185	L-0187	L-0189	L-0240	L-0229-E
Type		Greenough Type Stereoscopic Microscope	Convergent Type Binocular Microscope	Convergent Type Binocular Microscope	Convergent Type Binocular Microscope	Convergent Type Binocular Microscope
Magnification Changer		2 steps by changing knob	3 steps by drum rotation	5 steps by drum rotation	Continuous Zoom	5 steps by drum rotation
Stereo angle		13°	12°	12°	12°	12°
Magnification Ratio (Field of View)		10x (20.13mm) 16x (16.13mm)	10x (28.5mm) 16x (14mm) 25x (7mm)	6x (38mm) 10x (24mm) 16x (15mm) 25x (9mm) 40x (6mm)	Continuous from 10x ~ 30x (22mm~8mm)	6x (38mm) 10x (24mm) 16x (15mm) 25x (9mm) 40x (6mm)
Slit Width		0 -10 mm	0 -10 mm	0 -10 mm	0 -10 mm	0 -14 mm
Filters	Standard	Cobalt blue, Heat absorption, Red-free, 1/2 ND, Yellow	Cobalt blue, Heat absorption, Red-free, 1/2 ND	Cobalt blue, Heat absorption, Red-free, 1/2 ND	Cobalt blue, Heat absorption, Red-free, 1/2 ND	Cobalt blue, Heat absorption, Red-free, 1/2 ND
	Option	—	YF-57 adaptor built-in yellow filter	YF-57 adaptor built-in yellow filter	YF-57 adaptor built-in yellow filter	YF-57 adaptor built-in yellow filter
Colour selectable base		Selectable	Selectable	Selectable	Selectable	—
Weight		18.5 Kgs	18.5 Kgs	18.5 Kgs	18.5 Kgs	23 Kgs
Dimensions		LED: 550(W)x400(D)660(H)mm Halogen: 550(W)x400(D)690(H)mm	LED: 550(W)x400(D)660(H)mm Halogen: 550(W)x400(D)690(H)mm	LED: 550(W)x400(D)660(H)mm Halogen: 550(W)x400(D)690(H)mm	LED: 550(W)x400(D)660(H)mm Halogen: 550(W)x400(D)690(H)mm	LED: 550(W)x400(D)660(H)mm Halogen: 550(W)x400(D)690(H)mm



## INAMI – Advanced Mechanics

The advanced joystick by INAMI features a shutter release, a video recording function, a background illumination switch and light intensity control knobs. All components are assembled on a shaped base of all slit lamps for ease of use.



### Slide Joysticks Head Type

Inami's Slit Lamps are built with a precise, smooth and high quality joystick. All Inami devices provide a lateral, longitudinal and vertical movements during all examinations.



### High Quality Optics Binoculars

All Inami's Slit lamps provide a unique convergent type binocular microscope for high quality optics and excellent image quality for all ophthalmology demands.



## Slit Lamp Illumination

Inami's Slit Lamps Illumination features a built-in yellow filter for clearer view and energy saving light source generating no UV and less heat. All INAMI'S devices enables you to optically change the illumination field up to 14mm by single click actions.

- ✓ Sharp and even illumination
- ✓ Environmentally-friendly
- ✓ Powerful and long-lasting light source
- ✓ Less stress to patient's eye



## LED Background Illumination

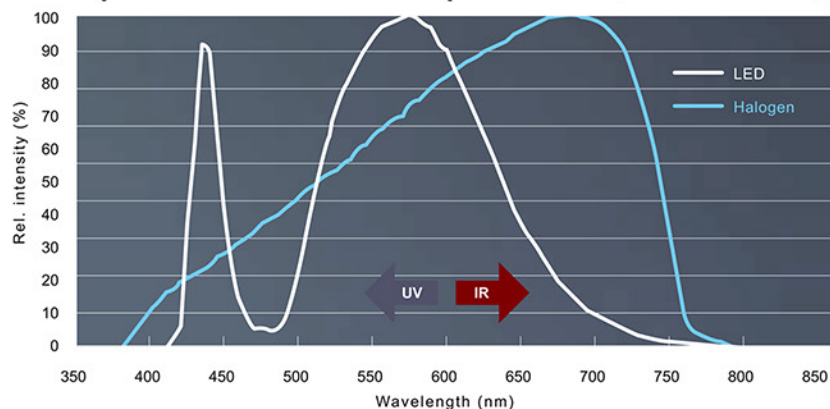
L-0229-E slit lamps features the LED background illumination system which allows you to take clear detailed and bright images of slight light.





## Spectrum of slit lamp

(PHAROS LED)



## Filter Insertion

Control + Lever

INAMI slit lamps offers an optical filters controllers can selectively transform light of different wave-lengths used in many applications available filters: cobalt blue, heat absorption, red-free, 1/2 ND. All INAMI slit lamps have a yellow built in filter to improve the image quality during fluorescein tests.



## Click Action Illumination

The L-0229-E has a unique LED function called "S.I. GRANDE" which enables you to optically change the illumination field up to 14mm by a single click action. This is ideal for contact lens fitting observations



# Tonometers

## Ocular Pressure

L-5110 is an accessory to Slit Lamp devices used for measuring ocular pressure. The applanation measuring cone measures the amount of force needed to temporarily flatten part of your cornea, to prevent risk of developing glaucoma.



## Precise Measurements

### Accessories

INAMI's slit lamps offers an optional quality accessories such as a the L-5110 tonometers and the digital video camera which are designed to be mounted and combined with other manufacturers equipments.



## Advanced Drum

### Adjuster

The L-5110 can be easily be adjusted by turning the measurement drum to increase the pressure on the eye until a continuous, uniform applanated surface 3.06 mm in diameter is obtained.





High

SONY

Resolution

Frame rate

Speed

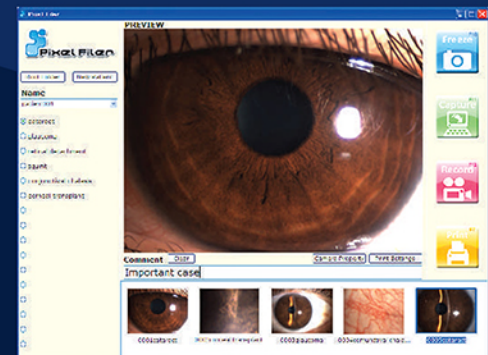
Cost performance

## Digital Video Camera L-0541 DC

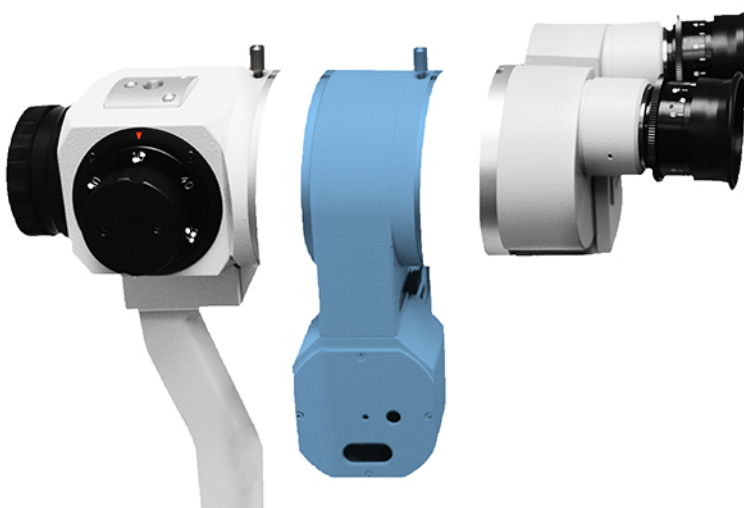
Inami's Digital Slit Lamps offers an SONY digital camera which takes crisp image, videos, embedded high quality sensor and a simple USB connection. L-0541 DC has a high speed data transfer(5Gbps) of the newest serial bus which assures a stable connection between the camera and your PC.



Inami's Pixel Filer 3.0 is an easy to use software for taking fine and detailed digital images, capturing videos, and sorting files. Inami's software runs in all Windows XP, 7, 8, and 10 (Included).



## Data Transfer USB Connection



The L-0541DC is an easy to use and cost saving USB camera for Slit Lamps devices offered with a high resolution detailed images and 15fps smooth video recordings.





## CANON

Digital Video Camera

Inami Slit Lamps offers an optional USB digital camera, with a unique software where you can store and create your own patient data base to capture high resolution photos and quality videos.



## Beam Splitter

For CANON Cameras



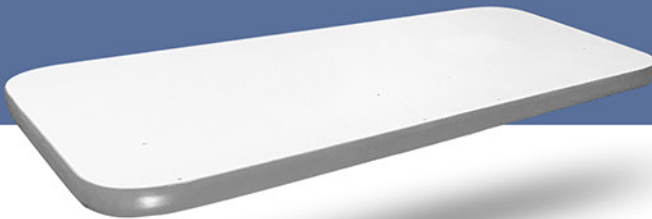
Slit lamps are designed to incorporate optional accessories such as the beam splitter and camera adaptor VL-Z8 so that it can be attached with the stylish Canon professional camera.



## Deluxe Electrical Tables (Optional Accessories)

Inami's digital slit lamps are all controlled at a touch of a hand, built with precise, and smooth quality optics. All Inami's devices are assembled to an optional sturdy and secured electrical tables which features of an adjustable height adjuster for one or two optical device configurations.

DT-EIT-16  
2 Size Instrument  
(Optional)



## Single & Double Table Tops

Inami's device table top stations are designed with a rugged construction and simplistic design. All table tops are assembled to the optional electric pole and stands, therefore it allows you peace of mind knowing all your instruments are secured on a stable and adjustable platform.

TT-EIT-16  
1 Size Instrument  
(Optional)



Height Adjuster

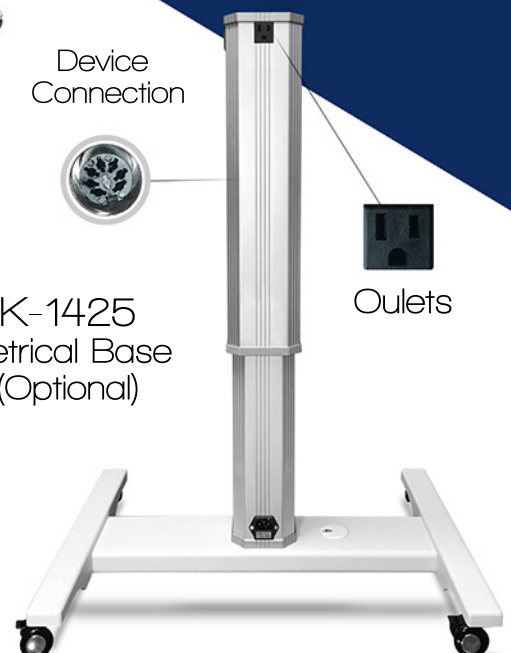
Device  
Connection

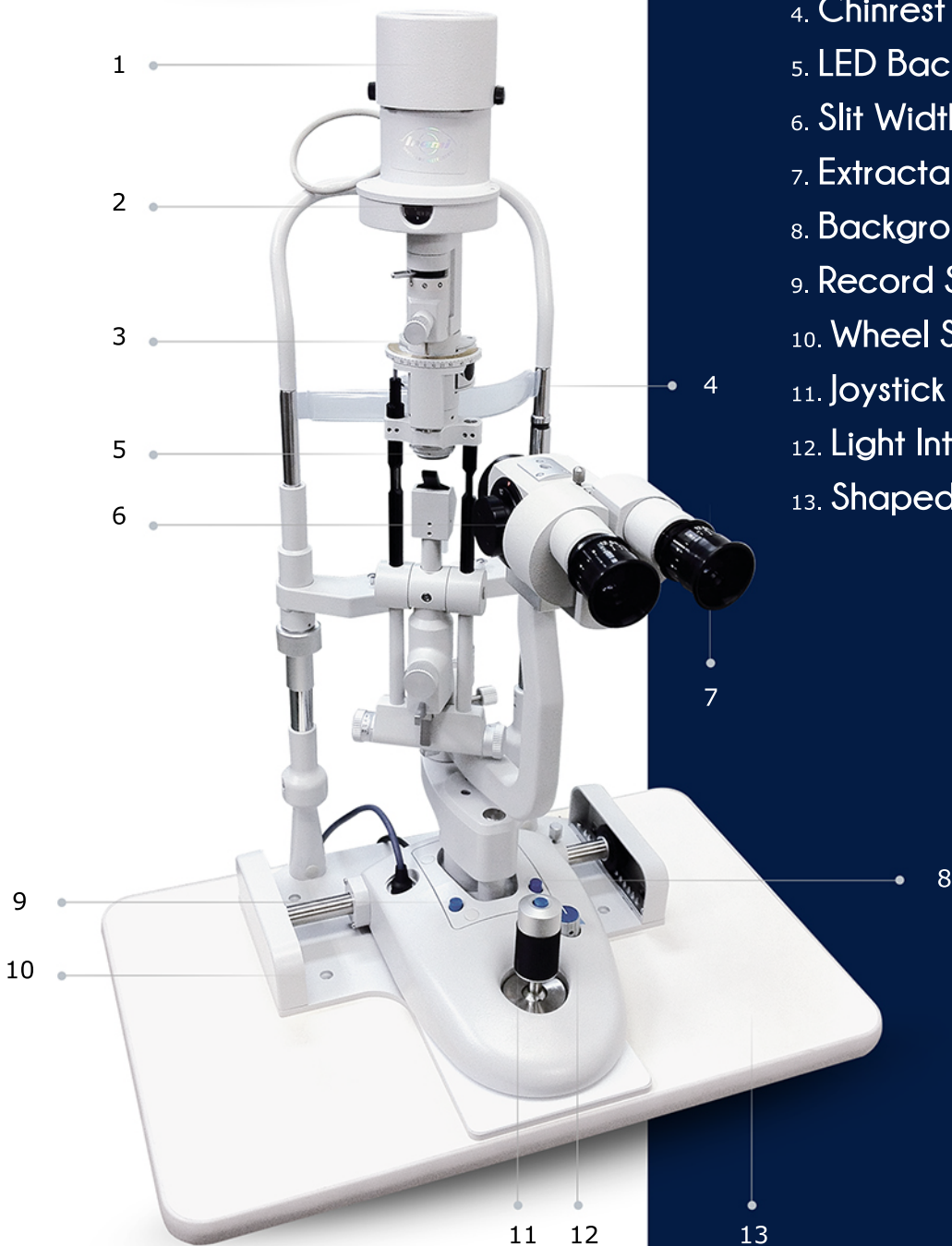
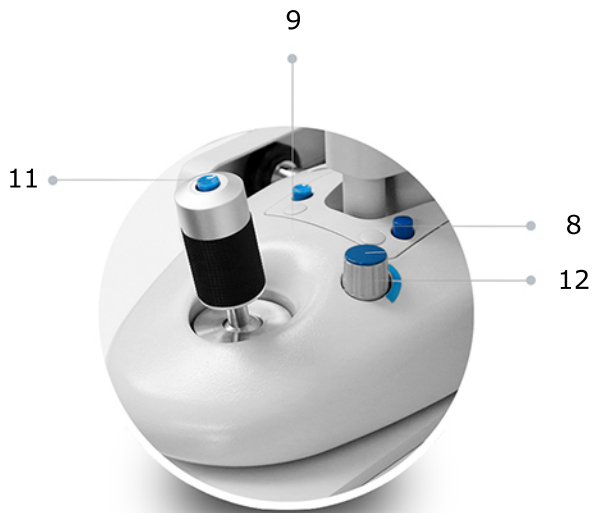


K-1425  
Electrical Base  
(Optional)



Outlets





# *Inami*

## *Halogen & LED Series*

### SLIT LAMPS

1. Light Bulb / LED or Halogen Cover
2. Digital Video Camera Splitter
3. Slit Height Adjuster / Tuner
4. Chinrest
5. LED Background Illumination
6. Slit Width Adjusting Knobs
7. Extractable Microscope
8. Background Illumination Switch
9. Record Start / Stop
10. Wheel Shields
11. Joystick (Camera Freeze & Capture)
12. Light Intensity Controller
13. Shaped Tabletop



# Specifications

	Standard / Option	L-0185-LED (LED) L-0185 (Halogen)	L-0187-LED (LED) L-0187 (Halogen)	L-0189-LED (LED) L-0189 (Halogen)	L-0240-LED (LED) L-0240 (Halogen)	L-0229-E-LED (LED) L-0229-E (Halogen)
<b>Microscope</b>						
Type		Greenough Type Stereoscopic Microscope	Convergent Type Binocular Microscope	Convergent Type Binocular Microscope	Convergent Type Binocular Microscope	Convergent Type Binocular Microscope
Magnification Changer		2 steps by changing knob	3 steps by drum rotation	5 steps by drum rotation	Continuous Zoom by drum rotation	5 steps by drum rotation
Stereo angle		13°	12°	12°	12°	12°
Eyepiece	Standard	10x	12.5x	12.5x	12.5x	12.5x
	Option	16x	—	—	—	—
Magnification Ratio (Field of View)		10x (20.13mm) 16x (16.13mm)	10x (28.5mm) 16x (14mm) 25x (7mm)	6x (38mm) 10x (24mm) 16x (15mm) 25x (9mm) 40x (6mm)	Continuous from 10x ~ 30x (22mm~8mm)	6x (38mm) 10x (24mm) 16x (15mm) 25x (9mm) 40x (6mm)
Pupillary Adjustment		52 - 90 mm	53 - 83 mm	53 - 83 mm	53 - 83 mm	53 - 83 mm
Focus Distance		100 mm	106 mm	106 mm	106 mm	106 mm
Diopter Adjustment		+ 8 to -8 diopters	+ 8 to -8 diopters	+ 8 to -8 diopters	+ 8 to -8 diopters	+ 8 to -8 diopters
<b>Slit Illumination</b>						
Slit Width		0 -10 mm	0 -10 mm	0 -10 mm	0 -10 mm	0 -14 mm
		—	—	—	—	0 -8 mm (S.I. GRANDE position 2)
Aperture Diameter		0.2, 1, 3, 4, 6, 10 mm	0.2, 1, 3, 4, 6, 10 mm	0.2, 1, 3, 4, 6, 10 mm	0.2, 1, 3, 4, 6, 10 mm	0.3, 1.4, 4.2, 5.5, 8.3, 14 mm
		—	—	—	—	0.2, 0.8, 2.4, 3.2, 4.8, 8mm (S.I. GRANDE position 2)
Slit Length		0 -10 mm	0 -10 mm	0 -10 mm	0 -10 mm	0 -14 mm
		—	—	—	—	0 -8 mm (S.I. GRANDE position 2)
Slit Rotation		± 90°	± 90°	± 90°	± 90°	± 90°
Filters	Standard	Cobalt blue, Heat absorption, Red-free, 1/2 ND	Cobalt blue, Heat absorption, Red-free, 1/2 ND	Cobalt blue, Heat absorption, Red-free, 1/2 ND	Cobalt blue, Heat absorption, Red-free, 1/2 ND	Cobalt blue, Heat absorption, Red-free, 1/2 ND, Yellow
	Option	UV, IR, 1/10 ND etc. (To be replaced with standard filters)	UV, IR, 1/10 ND etc. (To be replaced with standard filters) Built-in binoculars yellow filter (YF-57)	UV, IR, 1/10 ND etc. (To be replaced with standard filters) Built-in binoculars yellow filter (YF-57)	UV, IR, 1/10 ND etc. (To be replaced with standard filters) Built-in binoculars yellow filter (YF-57)	UV, IR, 1/10 ND etc. (To be replaced with standard filters) Built-in binoculars yellow filter (YF-57)
Slit Inclination		5° 10° 15° 20°	5° 10° 15° 20°	5° 10° 15° 20°	5° 10° 15° 20°	5° 10° 15° 20°
Light Source		LED: (Orange) 14VDC 1A Halogen: Lamp bulb 12V/50W (L0160H1)	LED: (Orange) 14VDC 1A Halogen: Lamp bulb 12V/50W (L0160H1)	LED: (Orange) 14VDC 1A Halogen: Lamp bulb 12V/50W (L0160H1)	LED: (Orange) 14VDC 1A Halogen: Lamp bulb 12V/50W (L0160H1)	LED: (White) 14VDC 1A Halogen: Lamp bulb 12V/50W (L0160H1)
Max. intensity (Lux)		45,000Lux	45,000Lux	45,000Lux	45,000Lux	58,000Lux
<b>Background Illumination</b>						
Light Source		—	—	—	—	15VDC 0.1A
<b>Base</b>						
Vertical Movement		30 mm	30 mm	30 mm	30 mm	30 mm
Longitudinal Movement		79 mm	79 mm	79 mm	79 mm	80mm (Optional 103 mm is also available)
Lateral Movement		115 mm	115 mm	115 mm	115 mm	115 mm
Fine Base Movement		± 10 mm	± 10 mm	± 10 mm	± 10 mm	± 10 mm
Colour selectable base		Selectable	Selectable	Selectable	Selectable	—
<b>Chinrest</b>						
Vertical Movement		75 mm	75 mm	75 mm	75 mm	75 mm
Fixation Target		LED: LED 3V 0.01A (Option) Halogen: Halogen 6.3V 0.14A (L0150V2)	LED: LED 3V 0.01A (Option) Halogen: Halogen 6.3V 0.14A (L0150V2)	LED: LED 3V 0.01A (Option) Halogen: Halogen 6.3V 0.14A (L0150V2)	LED: LED 3V 0.01A (Option) Halogen: Halogen 6.3V 0.14A (L0150V2)	LED: LED 3V 0.01A (Option) Halogen: Halogen 6.3V 0.14A (L0150V2)
Input Voltage		AC100, 120V, 220V, 240V 50/60Hz	AC100, 120V, 220V, 240V 50/60Hz	AC100, 120V, 220V, 240V 50/60Hz	AC100, 120V, 220V, 240V 50/60Hz	AC100, 120V, 220V, 240V 50/60Hz
Power Consumption		LED: 25VA Halogen: 65VA	LED: 25VA Halogen: 65VA	LED: 25VA Halogen: 65VA	LED: 25VA Halogen: 65VA	LED: 25VA Halogen: 80VA
<b>Size &amp; Weight</b> (Without table top)						
Weight		18.5 Kgs	18.5 Kgs	18.5 Kgs	18.5 Kgs	23 Kgs
Dimension		LED: 550(W)x400(D)x660(H) mm Halogen: 550(W)x400(D)x690(H) mm	LED: 550(W)x400(D)x660(H) mm Halogen: 550(W)x400(D)x690(H) mm	LED: 550(W)x400(D)x660(H) mm Halogen: 550(W)x400(D)x690(H) mm	LED: 550(W)x400(D)x660(H) mm Halogen: 550(W)x400(D)x690(H) mm	LED: 550(W)x400(D)x660(H) mm Halogen: 550(W)x400(D)x690(H) mm

# Inami

## Floor Surgical Microscopes



MADE  JAPAN

**5 STEPS MAG**

4x, 6x, 10, 16x, 25x

Motorized  
X & Y StageOptional  
AccessoriesCataract  
SurgeryVitreoretinal  
SurgeryOther Ophthalmic  
Surgery**MOTORISED  
ZOOM**Red Reflex  
KnobApochromatic  
Objective Lens

5 Steps Operation Microscope

L-0990

Multi Operation Microscope

L-0970

**5 STEPS MAG**

4x, 6x, 10, 16x, 25x

Motorised  
focusENT  
SurgeryPlastic  
SurgeryVeterinary  
SurgeryOther  
Surgery

ENT coupling

**5 STEPS MAG**

4x, 6x, 10, 16x, 25x





# Inami

## Viewlight USA - Inami Microscopes

INAMI's floor surgical operation microscopes are ergonomically designed with user friendly features of magnification drum rotation, wide range of expandability and high quality optics.

### Surgical Operation Main Microscope

- Model: Galilean-Type Binocular
- Magnification: Drum Type with 5 changes (4x, 6x, 10x, 16x, 25x)
- Objective Lens: F=200mm
- Eyepiece: Fields of view at 12.5x - 17mm diameter
- Light Source: Halogen lamp Bulb 12V light
- Filters: Retina protection, red-free, and bulb color.



### Quality Meets Affordability Best Prices in the Market

- Coaxial Illumination
- Suitable for all anterior and posterior surgery
- ZOOM or 5 magnification drum rotation
- Brilliant red reflex view for phaco & catarat surgery
- Motorized X & Y centering stage
- Illumination filters microscopy
- LED or Halogen light source
- Continous light intensity controller
- Foot remote controller
- Illumination filter microscopy



## 5 STEPS MAG

4x, 6x, 10, 16x, 25x

Model: L-0990-A



Objective Lens	F=200mm				
Total Magnification (x)	4	6	10	16	25
Field of View (mm)	55	35.5	22	13.5	8.5
Brightness (max)	85,00 Lux (5)				
Coaxial Illumination Field (mm)	33				

Objective Lens	F=175mm				
Total Magnification (x)	4.6	7	11.5	18.5	29
Field of View (mm)	53	35	22	13.5	8.5

Model: L-0995-AZ

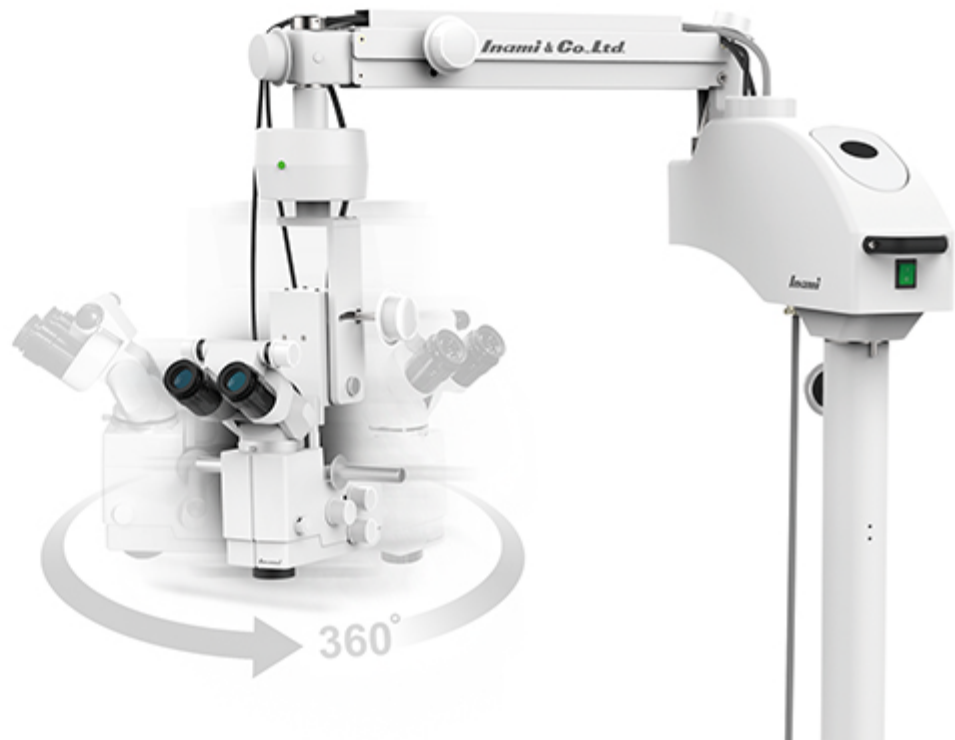


1. PD Adjuster Telescope
2. Eyepiece 12.5x
3. Microscope Fixing Screw
4. Microscope with 45° Tilt
5. Microscope Handles
6. 6° Coaxial Illumination with filter
7. Red Flex Knob
8. Switching Filter Knob
9. Objective Lens (F=175mm)

## Inclination Angles

Adjustable Binocular

L-0990-A and L-0995-AZ features an adjustable inclined binocular which enables surgeons to operate with comfort and efficiency specially during retinal surgery.





## X & Y Centering Device

INAMI's microscopes features a motorized X & Y stage, (horizontal arm 400mm long with 320° rotation) with a solid, stable structure designed to achieve the highest accuracy for all or any microscope arm positioning with minimal effort.



**Inami**



## Four Leg Base Mechanism

INAMI microscopes are designed for the highest stability with stable H-type base with casters and well balanced counter arms mounted on the pole with 1350mm height. This stable structure achieves the highest accuracy for the positioning of the microscope arm at any position with minimal effort.

Model: L-0990-A



Model: L-0995-AZ



## Foot Switch Operations

L-0900-A and L-0995-AZ microscopes offers a user friendly foot switch pedal which controls and adjusts the coaxial illumination, motorized micro-focusing movement of the X & Y system.



# Microscopes Accessories

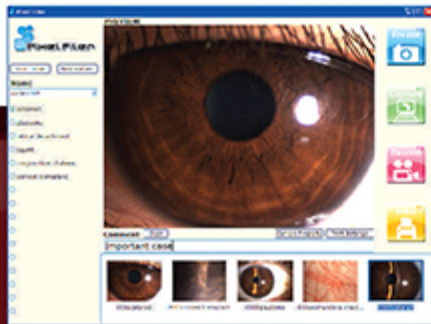


This ergonomic design microscope features an optional C mount system, beam splitter, assistant binocular microscope, and video USB camera.

Eyeiece: L-0995-AZ



Eyeiece: L-0990-A



## Digital Video Camera

1.

Inami microscopes offers an optional USB digital camera, with a unique software where you can store and create your own patient data base to capture high quality digital photos and videos.



Assistant Binocular  
Microscope

2.

The optional high quality assistant binocular coaxial microscope offers an apochromatic optics which allows the observer to magnify and visualize the red flex with easy and control.



Beam Splitter  
Devices

3.

All operation microscopes features an optional beam splitter that can be easily assembled and it allows you to attached many other Inami optional accessories.



Video Camera Adaptor  
C-Mount F=70mm

4.

This optional video digital camera adaptor is designed for a easy and quick assembly access while adding the USB digital camera.

## Light Sources

### Halogen Bulbs

INAMI's microscopes main illuminator employs an LED or a two set of bright and cool 15V 150W halogen lamps with a max intensity 60-110,000 Lux.



Model:  
L-0995-AZ



Model:  
L-0990-A



NO 1

NO 2



Model:  
L-0990-A



## Voltage Selectors

### Illumination System

Inami microscopes offers a convenient illuminator control lamp house where you can access and change settings fairly quickly. Also features a two illumination system where you can independently switch them just in case of a lamp failure while in the middle of a delicate operation.

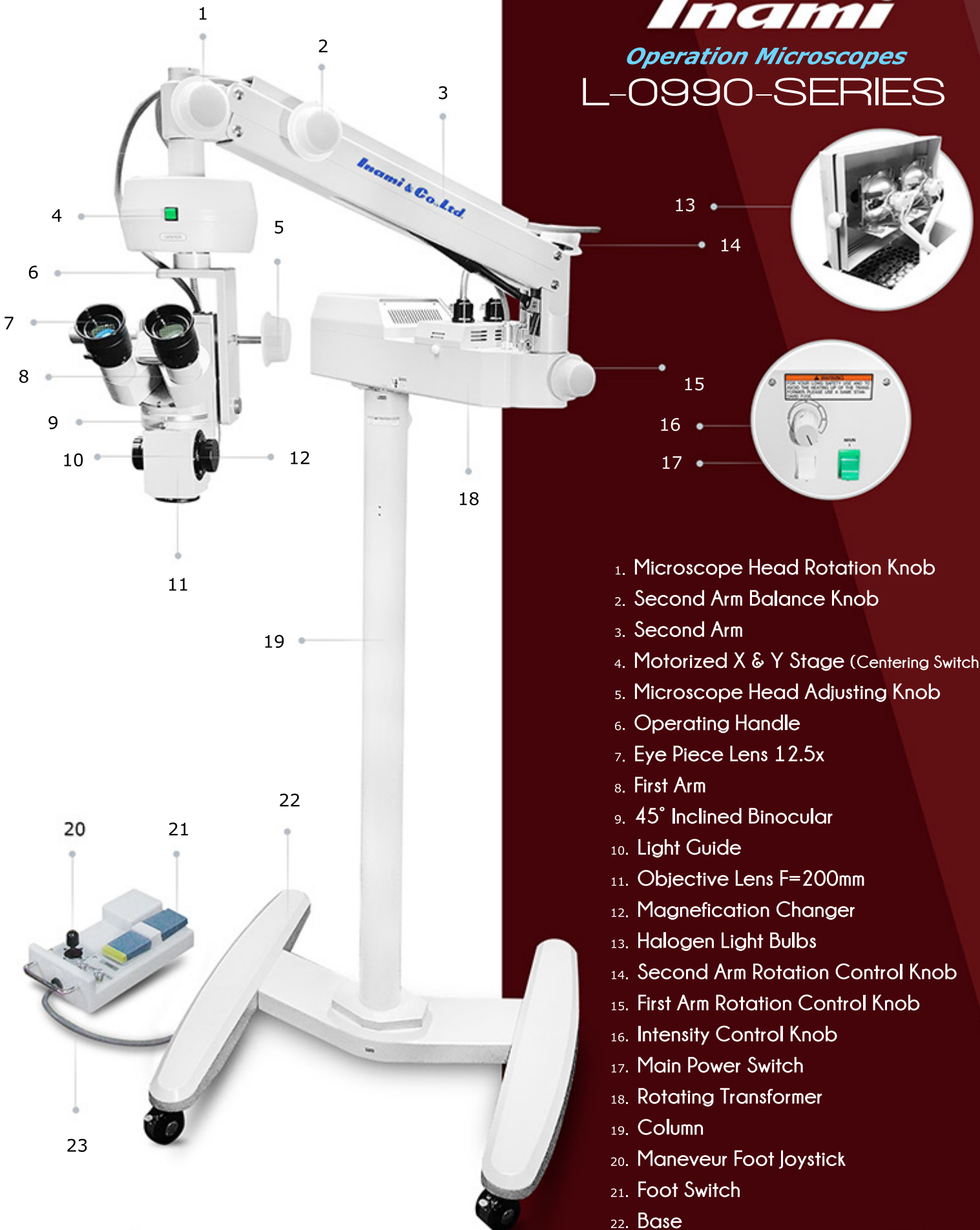
Model:  
L-0995-AZ



# Inami

## Operation Microscopes

### L-0990-SERIES



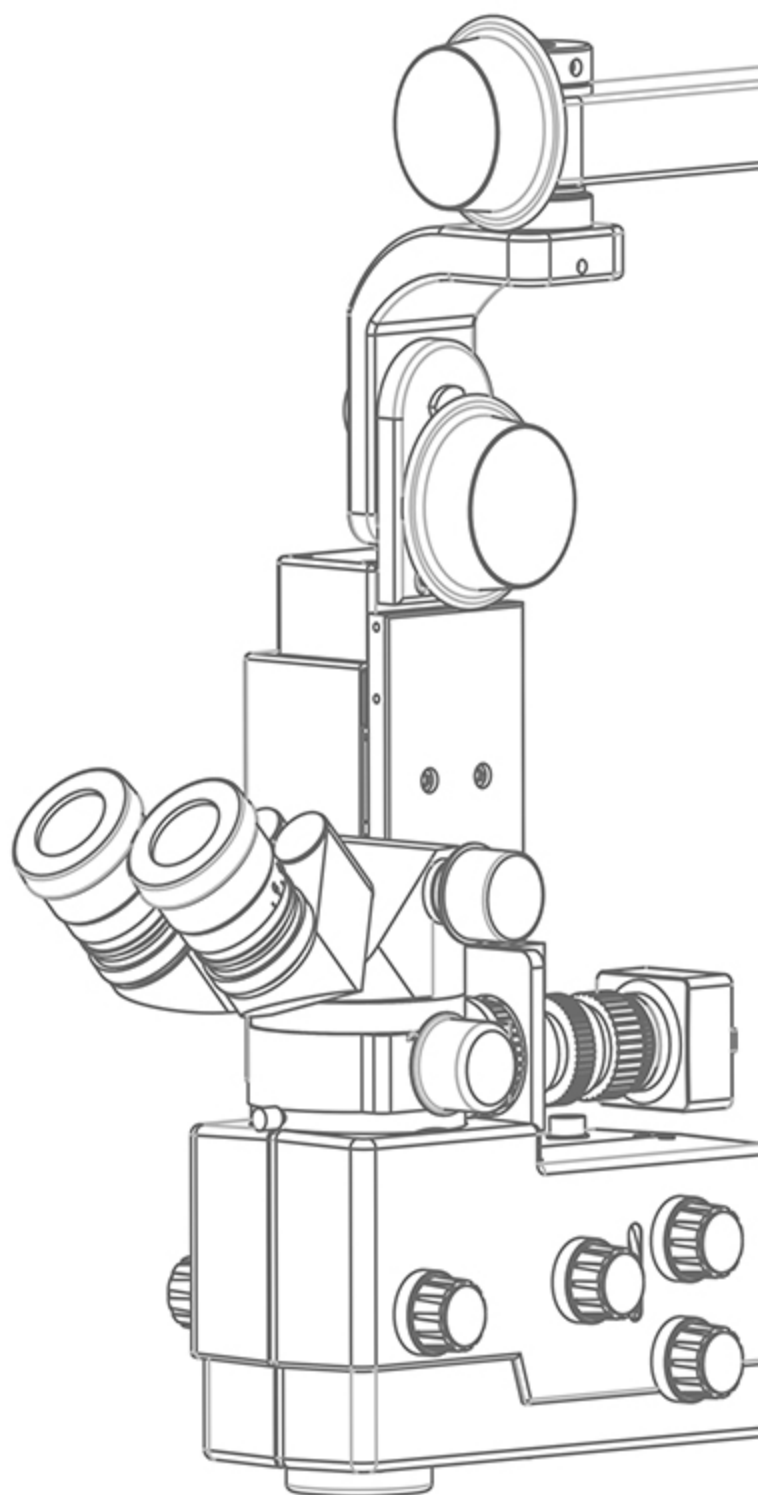
1. Microscope Head Rotation Knob
2. Second Arm Balance Knob
3. Second Arm
4. Motorized X & Y Stage (Centering Switch)
5. Microscope Head Adjusting Knob
6. Operating Handle
7. Eye Piece Lens 12.5x
8. First Arm
9. 45° Inclined Binocular
10. Light Guide
11. Objective Lens F=200mm
12. Magnification Changer
13. Halogen Light Bulbs
14. Second Arm Rotation Control Knob
15. First Arm Rotation Control Knob
16. Intensity Control Knob
17. Main Power Switch
18. Rotating Transformer
19. Column
20. Maneuver Foot Joystick
21. Foot Switch
22. Base
23. Connecting Cord

MADE IN JAPAN



# Specifications

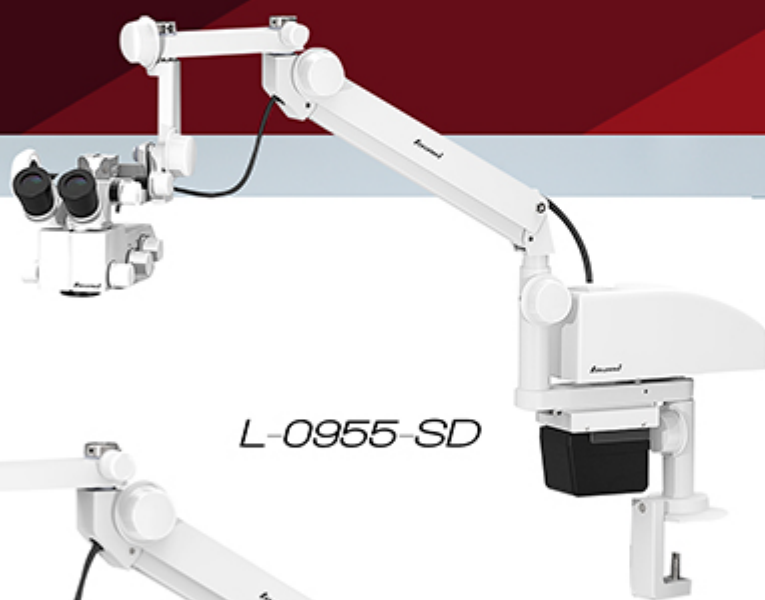
	L-0970	L-0990	L-0990-A	L-0995-AZ
Microscope				
Type	Galilean type binocular microscope			
Magnification Changer	5 Steps by drum rotation			Continuous zoom by drum rotation
Eyepiece	12.5 x Wide field high eye point with helicoidal diopter adjustment			15 x with helicoidal diopter adjustment
Total Magnification	4x, 6x, 10x, 16x, 25x			4.4x - 26.4x
Field of View	Φ 51 - 8mm		Φ 72 - 11mm	Φ 48mm - Φ 8mm
Pupillary Adjustment	50 - 75mm			54 - 70mm
Objective Lens	F=175mm		F=250mm	F= 200mm
Diopter Adjustment	-6D - +5D			-7D - +7D
Illumination				
Filter	Cobalt, Red free, Heat absorption, 1/2ND			
Light Source	15V 150W Halogen bulb with cold mirror filter			LED 13.5V 16W
Maximum intensity	110,000Lux			60,000 Lux
Co-axial Illumination Field	Φ 50mm			55-75mm
Focal Adjustment				
Type	Motorised			
Adjustable Distance	40mm			
Focusing Speed	1.3mm/sec			
Head Inclination				
Head Inclination Angle	0° - 30°		0° - 90°	
Head Swing Angle			Left - Right -30° - +30°	-7° to +18°
Objective Lens Swing Angle	-			
Foot Remote				
Type	Floor Type			
Weight	1.3kgs			
Red Reflex Unit				
Type	Detachable (Option)			
Filter	UV (Option)			
Total Weight	67kgs	63kgs	64kgs	92kgs



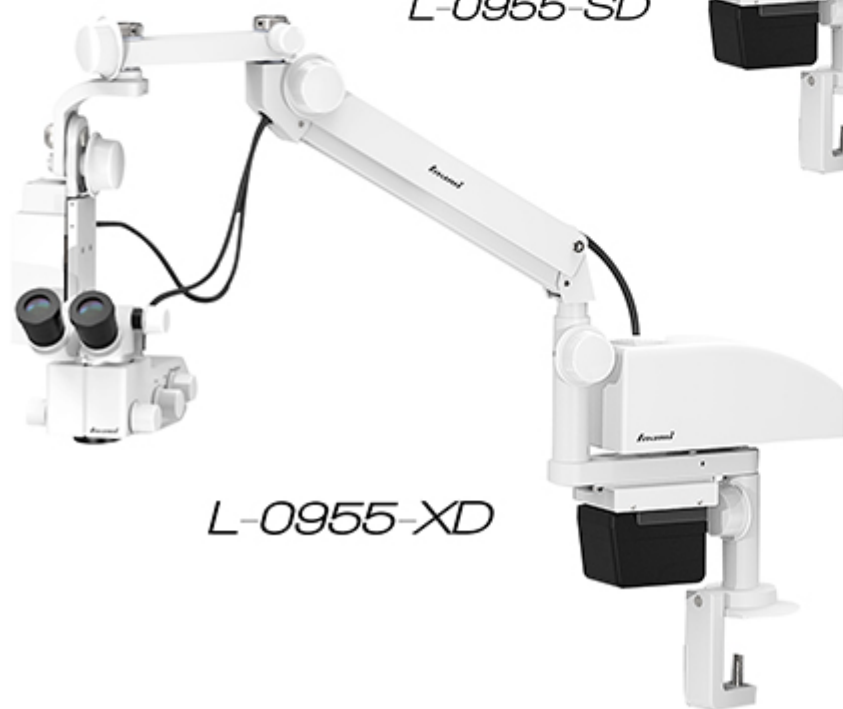
# Inami



*Portable Microscopes*  
**L-0940-SD**



**L-0955-SD**



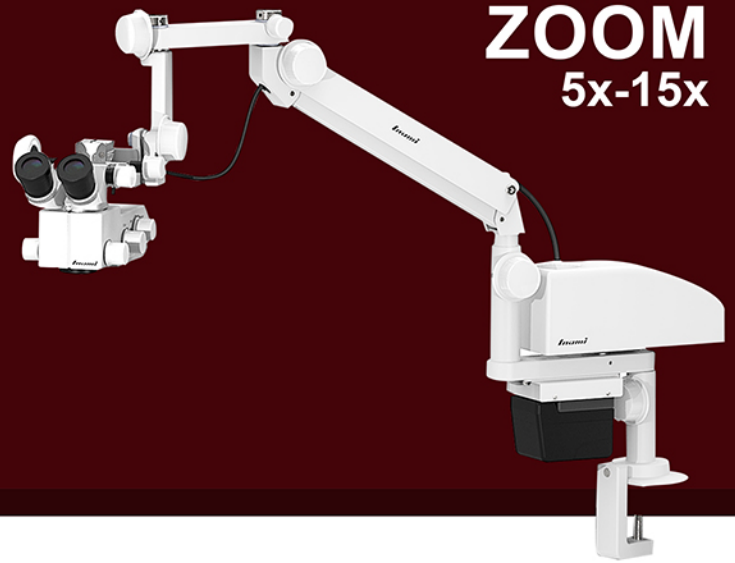
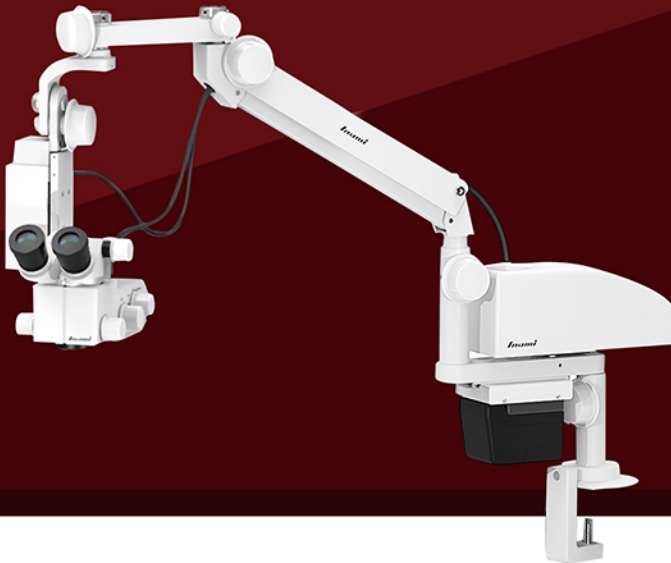
**L-0955-XD**

Portable Microscope  
**L-0955-XD**

Portable Microscope  
**L-0955-SD**

MANUAL  
**ZOOM**  
5x-15x

Model	Motorised focus (Foot switch)	Pole base (K-1422)	Battery	Built-in C-mount & camera
L-0955SD	-	option	●	Factory option
L-0955XD	●	option	●	Factory option



MANUAL  
**ZOOM**  
5x-15x

Cataract  
Surgery

Eye  
Camp

Other Ophthalmic  
Surgery

Plastic  
Surgery

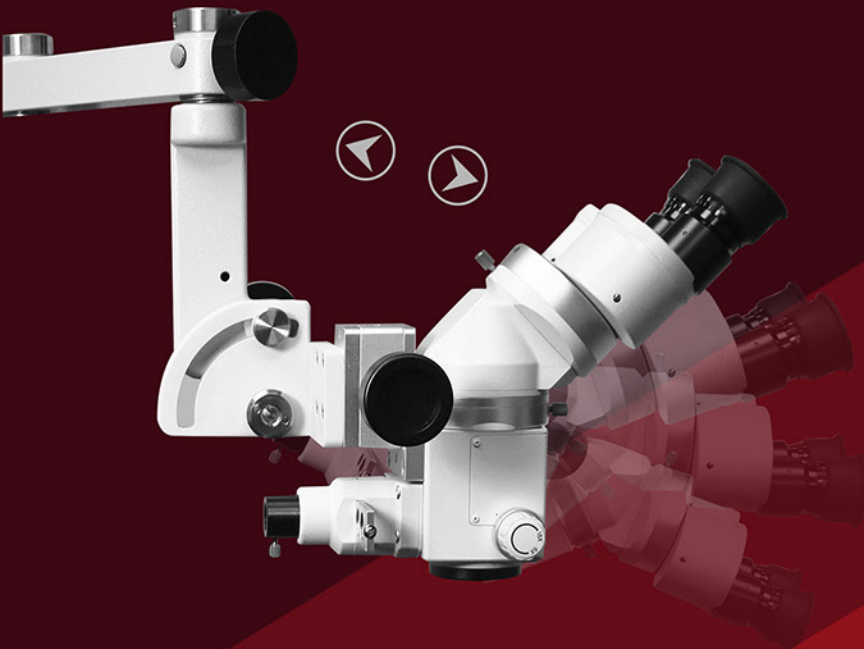
Portable Microscope  
**L-0940-SD**



MANUAL  
**ZOOM**  
6x-18x

Model	Motorised focus (Foot switch)	Pole base (K-1422)	Built-in C-mount & camera
L-0940SD	-	option	Factory option



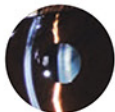


## Adjustable Microscope Head System

Inami's L-0940-SD portable microscope head adjuster provides a motorized powered focus with measurements that can be taken directly on screen, and an automatically generate a report data with all necessary images.



MANUAL  
**ZOOM**  
6x-18x



## 2x Magnifications Drum Type

The power focusing and adjustable 2 steps continuous magnification (6x - 18x) ranges by a field of view of 51~ 8mm, pupillary adjustment 50~75mm, objective lens F=175mm, and diopter adjustment -6D -  $\pm 5D$



## High Quality Optics Binoculars

Inami's L-0940-SD portable slit lamps provides a convergent type binocular microscope for high quality optics and excellent image quality for all ophthalmology demands.

## Illumination Filters

### Microscopy

The portable L-0940-SD illumination microscope filters (Cobalt, Blue, Red free, heat absorbing, 1/2ND) are used for photo microscopy observations and for either over the illuminator or in a filter slot that lies in the light path.



## Battery Operated

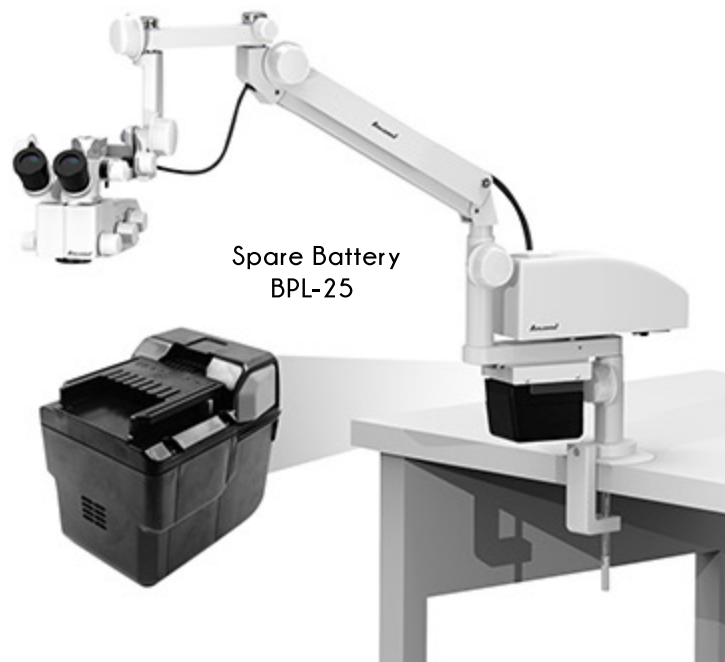
### Microscopes

Inami portable microscopes L-0955 XD and L-0955 SD operate with an ion lithium battery for intensity control and improved operability

## Voltage Selectors

### Illumination System

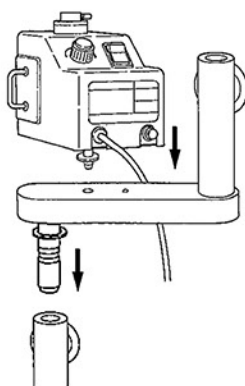
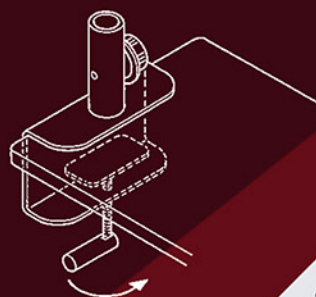
Inami microscopes offer a convenient illuminator control lamp house where you can access and change settings fairly quickly. Also features a two illumination system where you can independently switch them just in case of a lamp failure while in the middle of a delicate operation.





## Clamp System Wall & Table Mounting

Inami's portable microscopes are ergonomically design with a clamp mechanism for both table top or wall mount assembly, which allows the surgeons to balance the microscope head horizontally, vertically, and laterally.



## Four Leg Base Mechanism

All Inami's microscopes are built with a solid heavy weight four leg base and a two locking fixed mechanism to ensure a firm and steady position.

Optional  
Microscope Stand  
Model K-1422





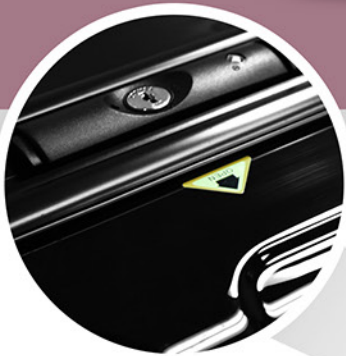


## Wherever you Go! Microscope Carry-On Case

Portable Microscope



Inami's portable operating microscopes, are securely contained in a high quality lockable carrying case with TSA lock system, vibration resistant casters that ensure durability, safe, and a smooth transportation while travelling.



Corner Protector



TSA Lock System



Smooth Casters



Top & Side Handles



# ***Inami***

*Operation Microscopes*

## L-0240-SD



1. Microscope Head Rotation Knob
2. 15x Eyepiece
3. 45° Adapter
4. Zoom Magnification Rotation Knob
5. Objective Lens
6. Second Arm Balance Knob
7. Second Arm
8. Microscope Head Adjusting Knob
9. Microscope Detaching Screw
10. Second Arm Rotation Control Knob
11. Illumination Filters
12. First Arm
13. First Arm Rotation Control Knob
14. Intensity Control Knob
15. Rotating Transformer
16. Pole and Base (K-1422)
17. Microscope Carry-On Case

# Specifications

		L-0955SD	L-0955XD	L-0940SD
Microscope	Magnification Changer	Continuous zoom by drum rotation	Continuous zoom by drum rotation	Continuous zoom by drum rotation
	Light source	LED	LED	HALOGEN
	Eyepiece	12.5x	12.5x	15x
	Total Magnification	5 ~ 15x	5 ~ 15x	6 ~ 18x
	Field of view	φ42 ~ 14	φ42 ~ 14	φ35 ~ 10
	PD Adjustment	50 ~ 70mm	50 ~ 70mm	50 ~ 75mm
	focus	-	Motorised focus(foot switch)	-
	Objective Lens	175mm	175mm	175mm
	Diopter Adjustment	±6D	±6D	±6D
	Illumination field	φ45	φ45	φ45
	Red reflex	-	-	-
	Maximum intensity	80000Lux	80000Lux	80000Lux
	Filter	Retina protection, Red-Free, Bulb color	Retina protection, Red-Free, Bulb color	Cobalt,Red free, Heat absorption,ND
Power source	Input voltage	AC100 ~ 240V	AC100 ~ 240V	AC100 ~ 240V
	Power Consumption	50VA	50VA	200VA
Battery	Voltage	25.2V	25.2V	-
	Capacity	3Ah	3Ah	-
Main unit	Weight	16kg (27kg *H style base)	17kg (28kg *H style base)	13kg (24kg *H style base)

## Optional accessories



H style base  
K-1422



Assistant binocular microscope  
L-0542-CB



Spare Battery  
BPL-25



Video camera adaptor with C-mount  
L-0544 (F=100mm) L-0554 (F=70mm)



Digital Video Camera 1.3 Mega Pixel  
CMLN-13S2C-CS



Beam splitter device  
L-0541



# Inami



## K-0391

*Trial frames*

MADE  JAPAN

PG. 32

FDA

# Precise Positioning

K-0391 trial frames offers comfortable fit and smooth controls for precise and easy lifting. K-0391 position of axis can be determined from the circular scale on both sides of the frame to adapt the frame to various shapes of patients head.



Knob is below frame easy to adjust



Comfortable silicone nose pad



Aluminum Knob

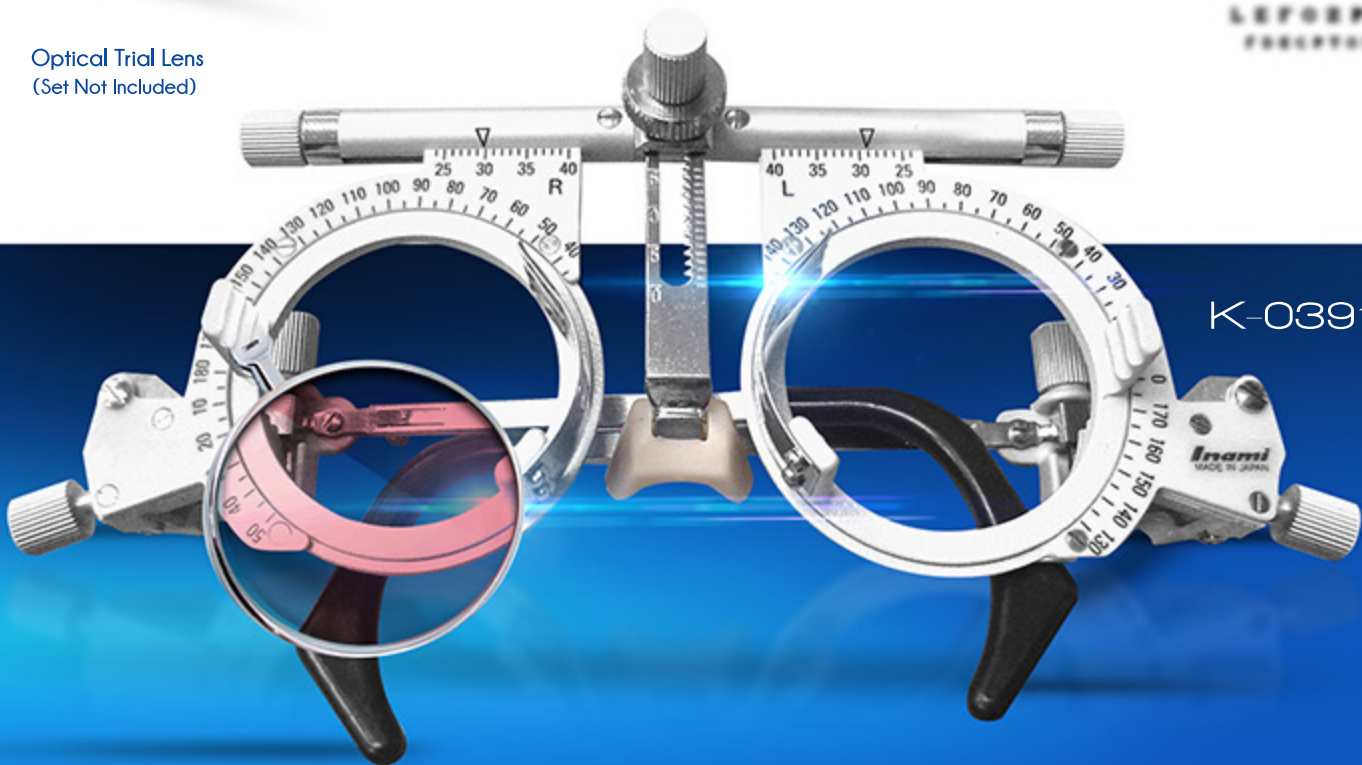


Adjustable Frame Temple



Optical Trial Lens  
(Set Not Included)

ETDRS - Early Treatment  
Diabetic Retinopathy Study



K-0391-G

## PD Adjustments

The K-0391 permits to adjust the PD, axis of the lens, frame length, and the position of the nose pad for a smooth measurement.



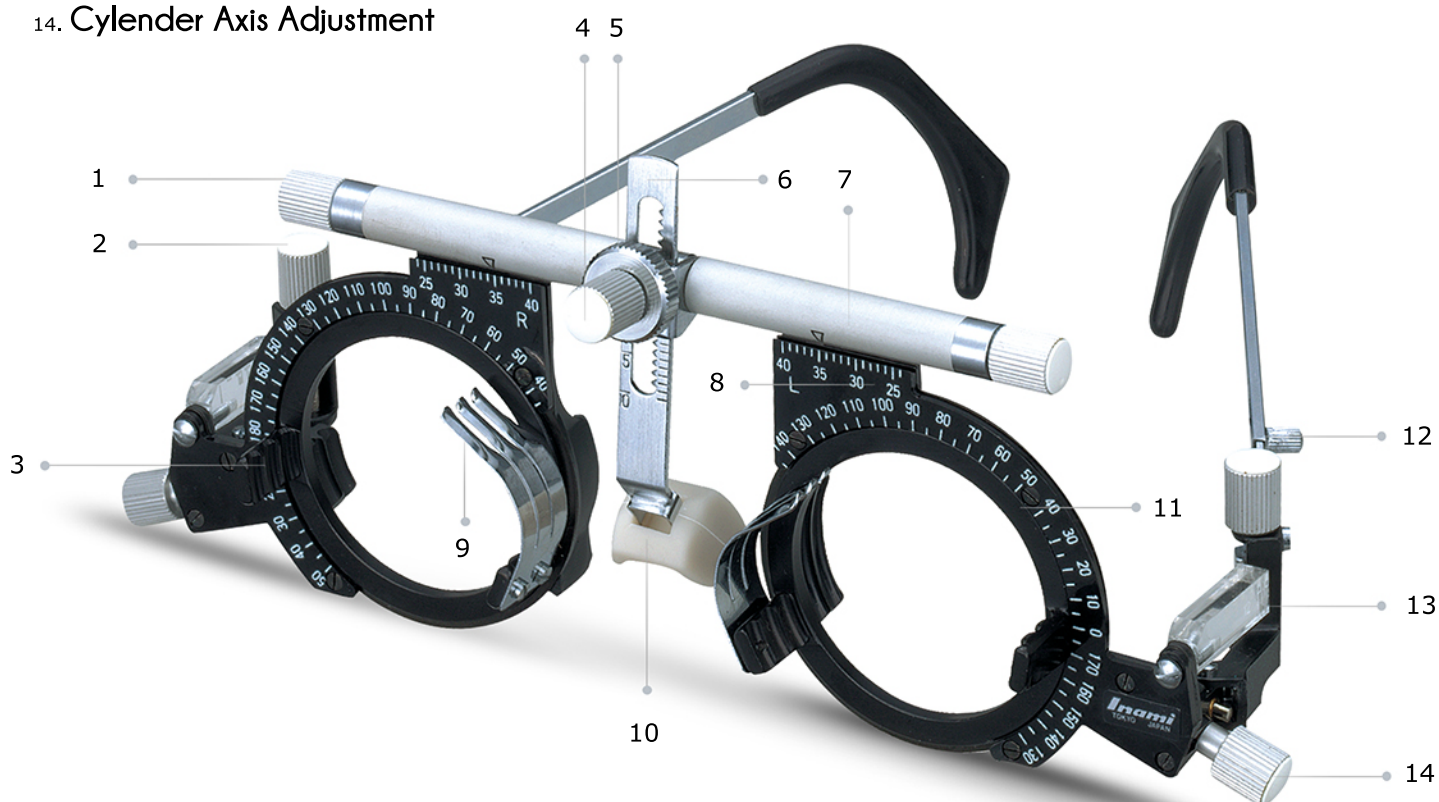
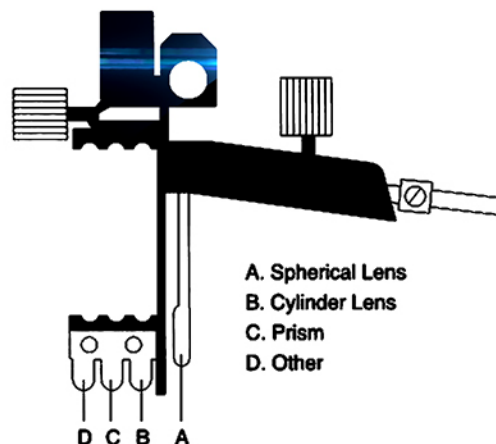
## Test Chart Reading

K-0391 is designed with precise measurements through a Test Chart reading. K-0391 phoropter measures and determines patients spectacle lens prescription during and eye examination.

1. PD Adjustment Knob
2. Side Angle Adjustment
3. Lens Holder
4. Nose Pad Adjustment Knob
5. Nose Pad Position Fixation Knob
6. Nose Pad Adjustment Plate
7. Index for PD Measuring
8. Lens Axis Measurement
9. Lens Fixation Plate
10. Nose Pad
11. Cornea Position Measurement
12. Frame Length Adjustment Knob
13. Cornea Position Measurement
14. Cylinder Axis Adjustment



Trial Lenses are inserted into lens cells for refraction and visual acuity measurements





## TRIAL FRAMES

The ergonomic design of Inami trial frames are a highly and durable instrument which features a quick and easy adjustment for both PD and corneal alignment.



## Product Specifications

PD Distance	48-80mm ( $\pm 0.8$ mm) Left or Right PD 24~180mm
Cornea Measuring Date	2mm Interval
Frame Adjustable Lens	35 (upward 30, downward 5)
Frame Adjustable Length	35mm
Nose Pad Adjustable Angles	360
Nose Pad Adjustable Legth	22mm
Maximum Available Lenses	10 pcs.
Axis of Lens	0° , 180°
Weight	72g
Maximum Interval Lens Frames	200mm
Inner Diameter of Lens Frame	$\Phi 32.5$ mm
Maximum Interval Lens Frames	200mm
Axial Calibration on Each Disc	Left disc 120°~0°~135° Right disc 45°~180°~60°
Available Colors	White or Black



K-0391



# Inami

*Vision Tester*  
**L-7040**

MADE  JAPAN

PG. 36

**FDA**

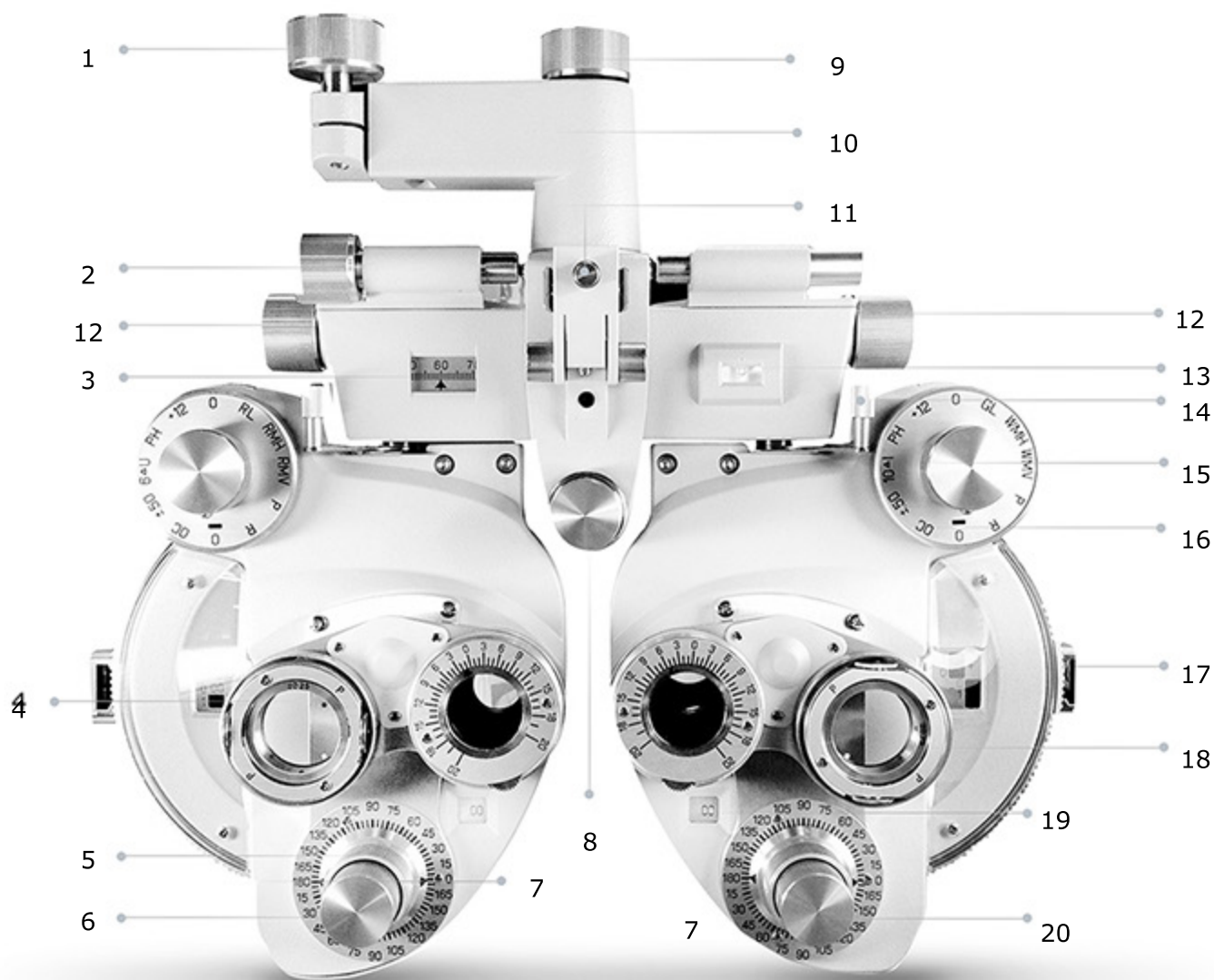


# Inami

Exophthalmometer

## L-7040

- |                            |                             |                             |
|----------------------------|-----------------------------|-----------------------------|
| 1. Tilt Clamp Knob         | 8. Forehead Rest Knob       | 14. Vergence Level          |
| 2. Leveling Knob           | 9. Rotation Adjustment Knob | 15. Auxiliary Lens Knob     |
| 3. P. D. Scale             | 10. Mounting Bracket        | 16. Auxiliary Lens Scale    |
| 4. Sphere Power Scale      | 11. Reading Rod Holder      | 17. Corneal Aligning Device |
| 5. Cylinder Axis Indicator | 12. P. D. Knob              | 18. Rotaty Prism Unit       |
| 6. Cylinder Power Knob     | 13. Spirit Level            | 19. Cylinder Power Scale    |
| 7. Cylinder Axis Knob      |                             |                             |





## Features:

- The ergonomic design of L-7040 provides a clear and detailed illumination and observations for patients eye.
- L-7040 provides a optically additive lens system and an optical aligning device.
- L-7040 unique features is the Cross Cylinder Unit lenses which are geared together with the correcting cylinder test lenses.
- L-7040 illumination option reduces eyestrain by lighting the most commonly used scales and dials.
- L-7040 cylinder power and axis lens dials, the power range from 0.00 to  $\pm 6.00D$ .
- For all ophthalmologist or optometrist prefers the high precision of a manual visual tester.



Auxiliary Lens Dial



Cylinder Power and Axis



## Product Introduction

## Vision Testers L-7040



**L-7040** is an all-in-one instrument offers feather-touch controls that simplify near testing measurement.



**L-7040** is designed for subjective refractions determination of correction data for refraction anomalies and binocular functions.



**L-7040** optical corneal aligning device provides a optically additive lens system and a optical corneal aligning device.



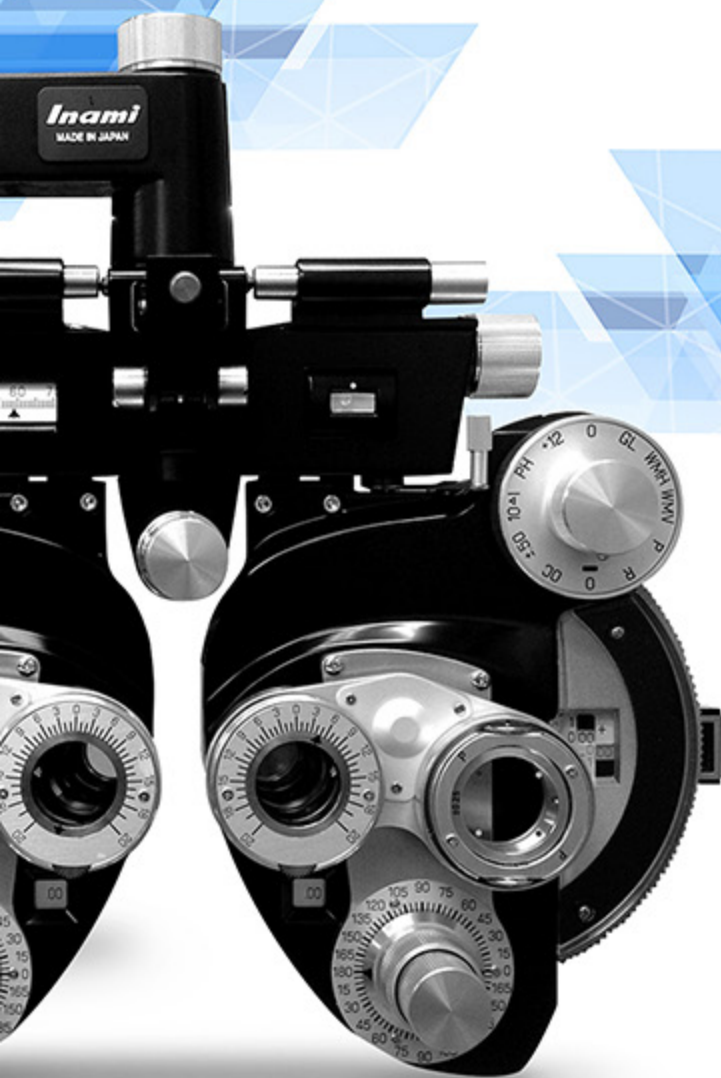
**L-7040** phoropter measures and determines and patients spectacle lens prescription during and eye examination.



**L-7040** scales the reading of the Corneal Aligning Device is used with the Correction Factor Table to determine the correction factor for the power reading.



**L-7040** visual field test eye examination will detect dysfunction in central and peripheral vision. Normative data using letters, patented bullseye or linear patterns.



## Product Specifications **Visual Testers** **L-7040**

Sphere Measurement Range	±16.75D to -19.00D tow-sphere power dial Increments: 0.25D steps
Cylinder Measurement Range	0.00D to -6.00D (extendable to 8.00D) Increments: 0.25D steps
Cylinder Axis Adjustment	360° (double 0-180° scales) Increments: 5° Steps
Rotary Prism Range	20 ^ each (paired gives 40 ^ in any base Increments: 1^ scale graduation
Standard Cross-Cylinder	±0.25D
Optional Cross-Cylinder	±0.37D and ±0.50D
Pupil Distance Adjustment	48 - 75mm (1mm scale graduation)
Corneal Vertex Distance	13.75mm
Reading Distance	5 - 28 (plus cm & D Scales)
Dimensions	335 x 97 x 294mm
Weight	4.5kgs

### Auxiliary Lens Dials

O/O:	Open Aperture
R:	Retinoscopic Lens +1.50D ( +2.00D option)
P:	Polarizing Filter
WMV:	Maddox Rod, vertical: white (left), red (right)
WMH:	Maddox Rod, horizontal: white (left),red (right)
GL:	Green Lens (left)
RL:	Red Lens (right) .
+12:	± 0.12D Spherical
PH:	Pin Hole
10^I:	10 Diopter Prism Base In (left)
6^U:	6 Diopter Prism Base Up (right)
±.50:	± 0.50D Fixed Cross Cylinder
OC:	Occluder

# Inami

*Exophthalmometer*

## K-0161

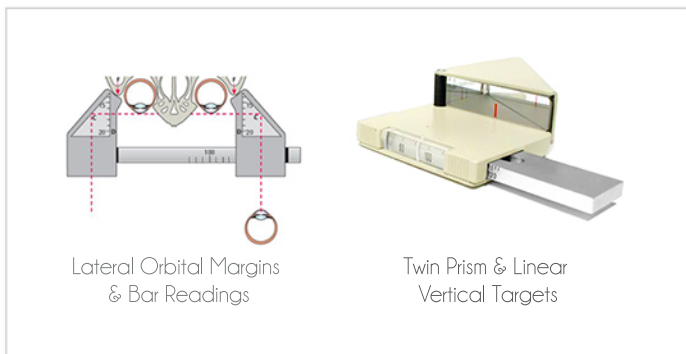
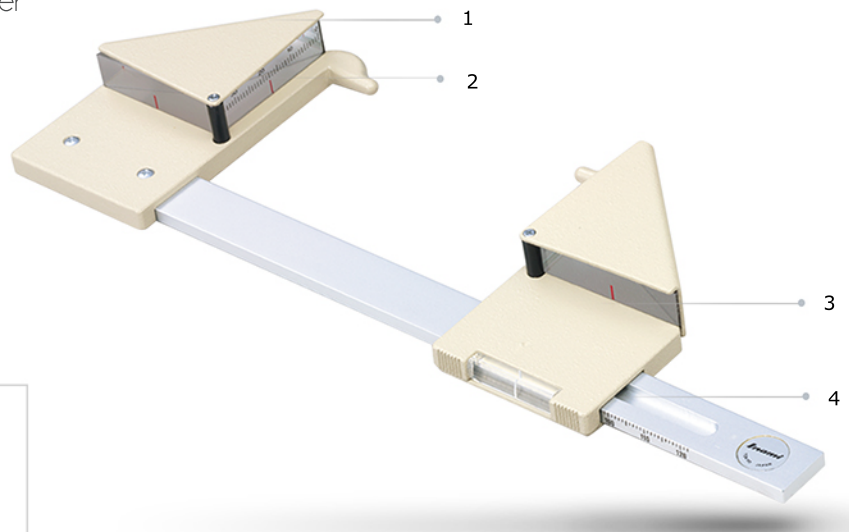




## Features:

- The ergonomic design of K-0161 determines the degree of anterior projection of the eyes.
- The K-0161 measures the prisms or mirrors set at 45° angles.
- Measures the difference in proptosis of the two eye rather than absolute proptosis.
- Uses fixation points slightly above and below superior & inferior orbital rims.
- K-0161 scales for orbital wall goes from 75 - 121mm and measure the proptosis ranges from 0 to 35 mm.
- Normal values vary between 10-21 mm and are symmetrical in both eyes.

1. Integral Scale Measurements
2. Concave Contact Points
3. Anterior Surface 45° Mirror
4. Distance Reader 0 - 35mm



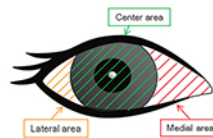
## Exophthalmometer

# K-0161

## Product Introduction



**K-0161** Normal range of bar readings is 12- 20mm. The reading is usually the same in each eye and indicates the anterior distances from the cornea.



The reading represents the distance between the lateral orbital walls. This is accurate method of diagnosing patients with exophthalmos.



**K-0161** This device measurements the extraorbital prominence of the eye and view the anterior surface of the cornea through a mirror.



**K-0161** Allows for precise measurement of corneal projection through simple alignment of twin prism, linear vertical targets.

## Exophthalmometer K-0161

## Product Specifications

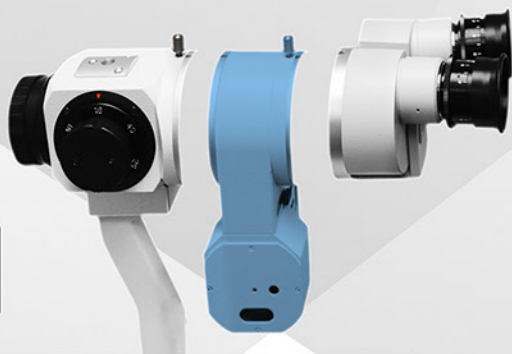
### Measurements

Microscope Head Type	Convergent Type Binocular Microscope
Magnification Changer	5 Steps by Drum Rotation
Stereo Angle	12
Magnification Ratio (Field of View)	6x (38mm) 10x (24mm) 16x (15mm) 25x (9mm) 40x (6mm)
Slit Width	0-14mm
Filters	Cobalt Blue, Heat Absorption, Red-Free, 1/2 ND, Yellow
Dimensions	LED: 550 (W) x 400 (D) x 660 (H) mm HALOGEN: 550 (W) x 400 (D) x 690 (H) mm
Weight	23kgs
Pupillary Adjustment	53 - 83 mm
Focus Distance	106 mm

### Slit Illumination

Light Source	LED: (White) 14VDC 1A Halogen: Lamp Bulb 12V/50W (L016H1)
Background Illumination	15VDC 0.1A
Slit Width	0-14mm (0-8mm S.I Grande position 2)
Aperture Diameter	0.3, 1.4, 4.2, 5.5, 8.3, 14mm
Slit Length	0-14mm (0-8mm S.I Grande position 2)
Slit Rotation	90
Slit Inclination	0° - 5° - 10° - 15° - 20°
Max Intensity	58,000 Lux

**SONY**  
**Digital Video Camera**  
*Beam Splitter for Slit Lamp*  
**L-0541DC**



**High**

Resolution

Frame rate

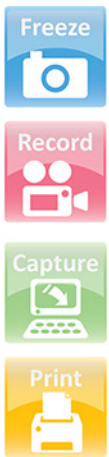
Speed

Cost  
performance



# Digital Video Camera L-0541DC

1. Digital Image and Video Software
2. Fixation Knob for Beam Splitter
3. Front Camera Beam Splitter
4. Filter Switch
5. Camera Aperture Controller
6. Camera Focus Controller
7. Binocular Rings
8. Back Camera Beam Splitter
9. Cable Connection to PC



MADE IN JAPAN

## Features:

- The ergonomic design of L-0541DC provides a clear and detailed images and videos while observing all patients eye.
- The L-0541DC is an easy to use and cost saving USB camera for Slit Lamps devices offered with a high resolution detailed images and 15fps smooth video recordings.
- Image sensors are showcased through the high quality Sony IMX036.
- Other accesories are available such as the foot remote controller and external LED background illumination.
- The L-0541DC is equipped with a aperture focus, and filter controllers which enables you to adjust manually.



SONY



## Digital Video Camera L-0541DC

MADE JAPAN

## Product Introduction



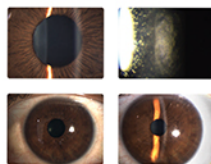
Inami's all drum magnification slit lamp models are fully compatible with the L-0541DC devices. Some slit lamps devices features a shutter release for image capturing and video recordings.



**Pixel Filer 3.0** is an easy to use software for taking fine and detailed digital images, capturing videos, and sorting files. Software run in all Windows XP, 7, 8, and 10 (Included).



**L-0541 DC** features a high quality image sensor from Sony's finest 1 2/8" image sensor clearly captures subtle details of the eye in high resolution.



**L-0541 DC** has a super smooth preview and movie 60fps frame provided by a rate which assures the success of details during the observation of patient's eye.



**L-0541 DC** offers a user friendly technology of assembling Slit Lamp accessories. This will allow all user to easily remove and add any additional parts with security and reliability.



**L-0541 DC** has a high speed data transfer (5Gbps) of the newest serial bus which assures a stable connection between the camera and your PC.



MADE  JAPAN

## Digital Video Camera L-0541DC

### Product Specifications

Image Sensor Type	Sony Progressive scan interline transfer CCD's with square pixels and global shutter
Image Sensor Model	ICX445 1/3" h EXview HAD CCD (TM)
Maximum Resolution	1280 (H) x 960 (V)
Pixel Size	3.75µm x 3.75µm
Analog to Digital Converter	5-pin Mini B USB 2.0 digital interface for camera control, video data transmission & power
Video Data Output / Max Frame Rate	15FPS 1296 x 964 Y8 at 18 FPS
Image Data Formats	Automatic / manual gain modules, programmable via software 0 dB to 24 dB in 0.04 dB increments
Digital Interface	Automatic / manual modes, programmable via software, 0.01 ms to 66 ms
Transfer Rates	2 W (max) at 5V
Partial Image Modes	Pixel binning and region of interest modes via format_7
General Purpose I/O Ports	7-pin JST GPIO connector, 4 pins for trigger and strobe, 1 pin +3.3 V, 1 VEXT pin for external power
Gain Control	Automatic / manual / one-push gain modes, programmable via software, 0 dB to 24 dB in 0.04 dB increments
Shutter Speed	Automatic / manual / one-push modes, programmable via software, 0.01 ms to greater than 10 seconds
Power Consumption	2 W (max) at 5V

 (Software Included)  
**Pixel Filer**  
Filing software Ver. 3.8



The Inami logo is written in a stylized, italicized blue font. A blue swoosh graphic is positioned above the letters 'i' and 'a'.

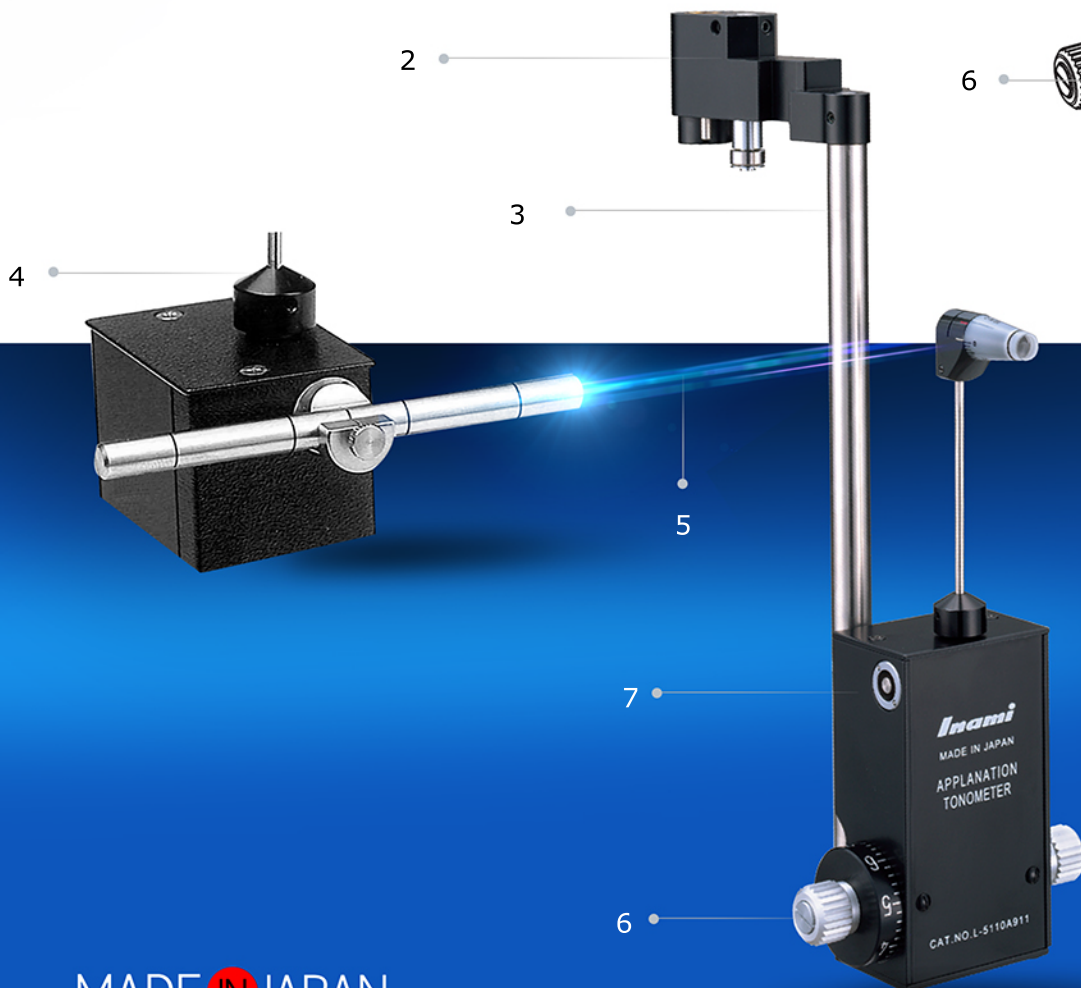
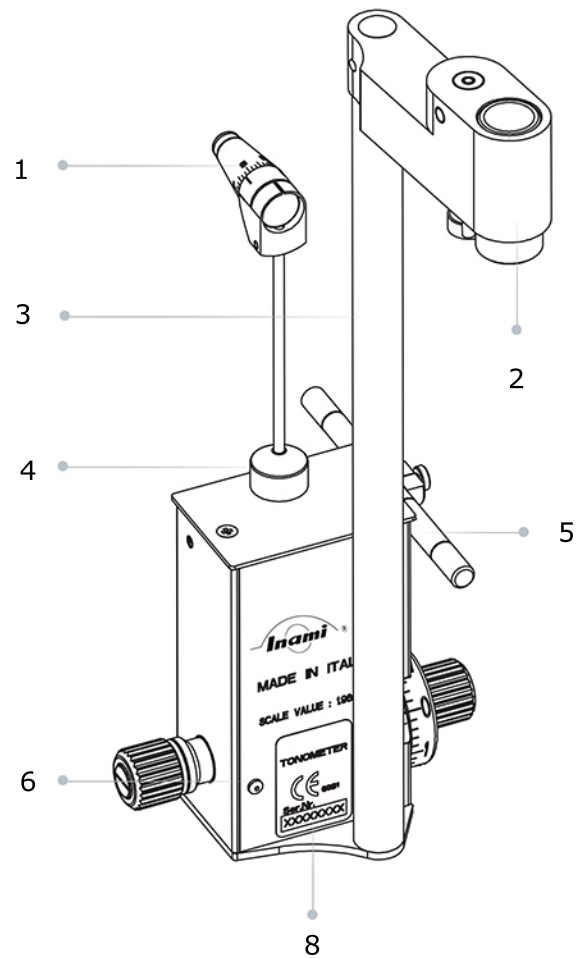
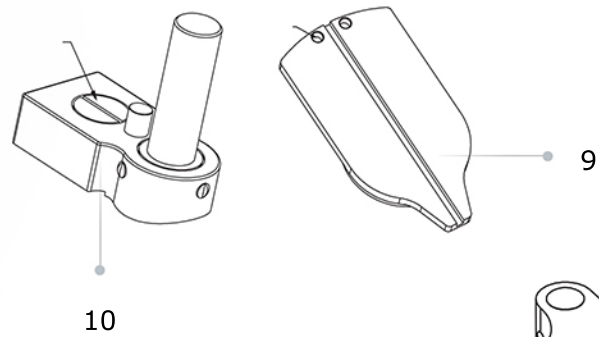
*Tonometer*  
**L-5110**



MADE  JAPAN

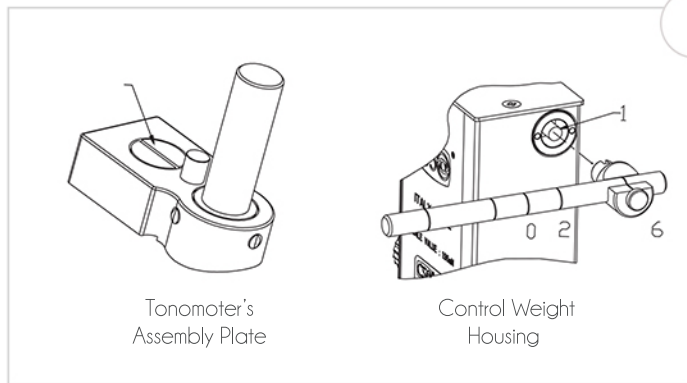
# Tonometer L-5110

1. Measurement Head
2. Fixing Hole on Plate
3. Bearing
4. Sensor Arm
5. Adjusting ROD
6. Rotating Knob with Measurement Drum
7. Control Weight Housing
8. CE Data Plate with Serial Number
9. Assembly Plate Holes
10. Screw to Fix



## Features:

- Ergonomic design, high quality optics and precision mechanical parts.
- L-5110 tonometers can also be mounted and combined with other manufacturers equipments.
- L-5110 is an accessory to Slit Lamp devices used for measuring ocular pressure.
- Precise measurement of the small flattened area is made using a slit lamp at 10x magnification.
- L-5110 measures the pressure required for maintaining uniform applanation of the corneal surface.



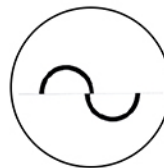
## Product Introduction

### Tonometers

# L-5110



The Applanation Measuring Cone measures the amount of force needed to temporarily flatten part of your cornea, to prevent risk of developing glaucoma.



Examine the angle between the lighting unit and the microscope in the left or right eyepiece should be about 60°. Adjust until the image is bright & without reflections.



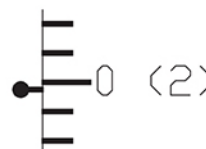
By turning the measurement drum to increase the pressure on the eye until a continuous, uniform applanated surface 3.06 mm in diameter (7,354 mm<sup>2</sup> area) is obtained.

Position of the measurement drum	Force mN	Pressure kPa	mmHg
1	9.81	1.33	10
2	19.62	2.66	20
3	29.43	39.9	30
4	39.24	53.2	40
5	49.05	66.5	50
6	58.86	79.8	60
7	68.67	93.1	70
8	78.48	10.64	80

Measuring Ocular Pressure's relationship between the pressure of the measurement drum and the farce and pressure on the supplanted surface.



Tonometer provides extreme measurement accuracy and the value is directly readable on the instrument, without any standardization and calibration difficulties.



The major advantage of applanation tonometry measurements is the limited extent of eyeball deformation.

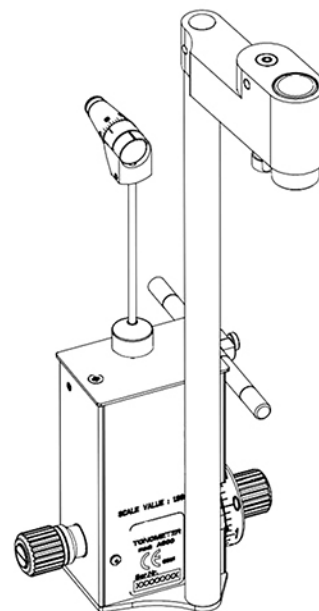




## Product Specifications **Tonometers** **L-5110**

### Measurements

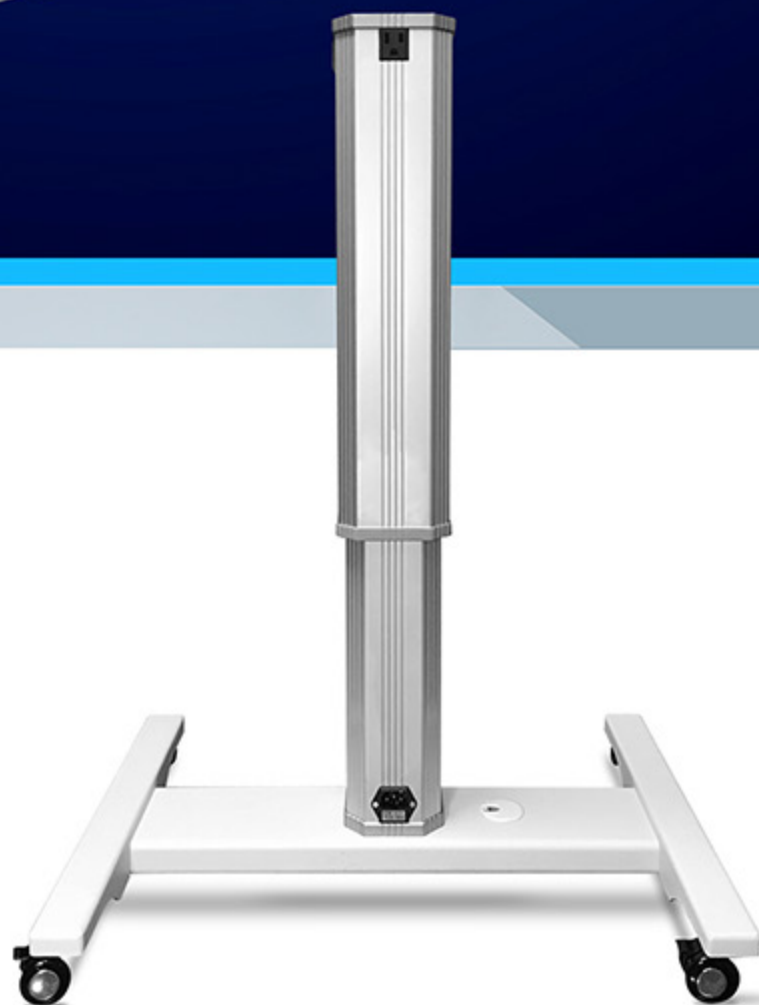
Pressure Surface	7mm
Measurement Drum Surface	3.06mm (7,354mm <sup>2</sup> area)
Conversations Pressure	mmHG to Kpa
Angle Light Source	60°
Tonomoter Scale	6 Calibrations
Measurement Force	Generated by the Spring
Measurement Range	0 / 80 mmHG (0/10,64kPa)
Weight	0.48 kg (without accessories)



# Inami



*Electrical Tables*  
**K-1425-PT**



1. Two Size Table Top DT-EIT-16 (Optional)
2. One Size Table Top TT-EIT-16 (Optional)
3. Up and Down Electrical Switches
4. 2x Outlets
5. Instrument Connection
6. Actuator
7. Electrical Base Elevation 600 - 850mm
8. Access Cable Supply Hole
9. Wheel Locks Casters
10. Base



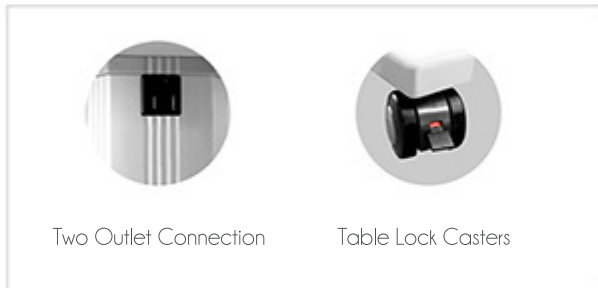


## Electrical Table

# K-1425-PT

### Features:

- Advanced technology designed for safe and reliable surface
- Light weight, easy to move and smooth adjustable transitions.
- Accessories screws, wrench, and plastic drawer are available
- Table Size is 600mm (W) x 450 (D)
- Range of Elevation is 600- 850mm
- Maximum loading ability is about 50kg.
- Input Voltage is AC220V
- Consumed Power is 700W (outlet400W)
- Up and Down electrical switch



### Product Introduction



Inami's K-1425-PT electrical tables provide a built-in up and down switches for a smooth, functional and operating characteristics table top.



The K-1425-PT is generally used for all slit lamps and other optical instruments. These powered elevation tables are secured and comfortable workspace.



All Inami's devices are assembled to an optional sturdy and secured electrical tables which features of an adjustable height adjuster for one or two optical device configurations.



1 Device - TT-EIT-16



2 Device - DT-EIT-16



Electrical Stand - K-1425-PT



## Product Specifications

### Electrical Table

# K-1425-PT

#### Measurements

Table Size:	600mm x 450mm
Height:	600mm x 850mm
Maximum Weight:	50kg
Continuous Running:	150 Sec
Rated Voltage:	AC220V
Consumed Power:	700w (Outlet 400w)

#### Component

Main Body:	Attached Table, Up-down switch and casters
Supply Cable:	1pcs
Conversion Plug:	1pcs
Fuse:	2pcs
Manual:	1pcs
Optional Tables:	1 Device TT-EIT-16   2 Device DT-EIT-16