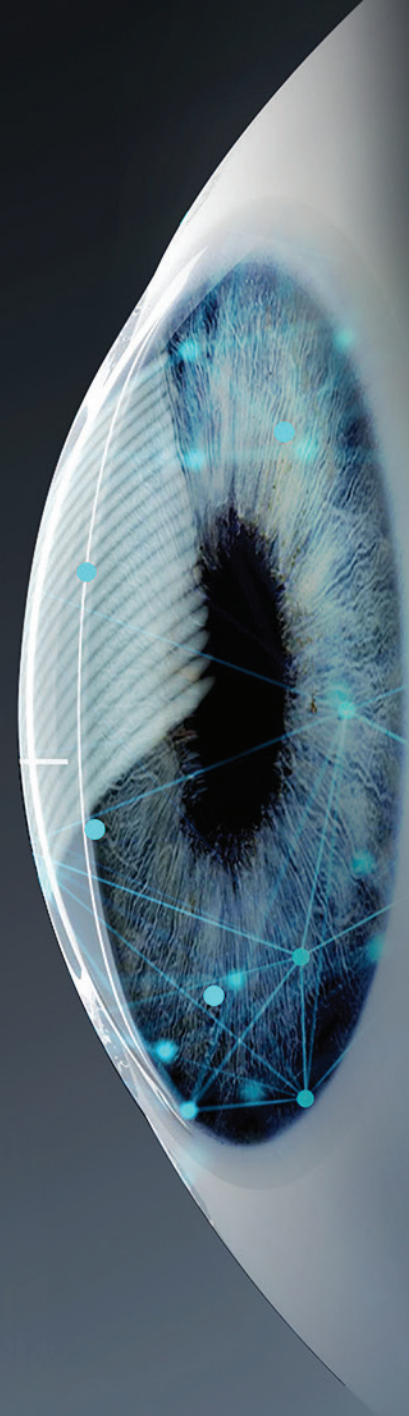




Endothelial Microscope PERSEUS



NOT SOLD IN
US



Endothelial Microscope PERSEUS

What does PERSEUS do?

PERSEUS is a fully automated non-contacted instrument providing analysis of the corneal endothelial while producing high definition quality and well contrasted images.

What type of diagnoses PERSEUS can detect?

The endothelial microscopy is essential in the diagnosis of many corneal dystrophy, degenerative diseases of pre and post operative assessment of cataract surgery and corneal transplants.

What other medical features it displays?

PERSEUS enables mapping and measurement of the endothelial cells and the acquisition of a series of parameters to evaluate the cornea's health status. See below for all relevant data:

- Cell density and average area
- Automatic focus of the endothelial layer
- Automatic calculation of cells centres and extensive statistical analysis based on the collected data
- Variance coefficient
- Average median error
- Cell size occurrence histogram





Endothelial Microscope PERSEUS

Quick Acquisition of Images

The digital CCD camera enables PERSEUS to automatically track and focus on the patients eye, taking high quality images. Simply touch the LCD screen and PERSEUS will simply do the rest.

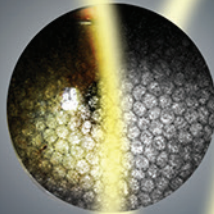
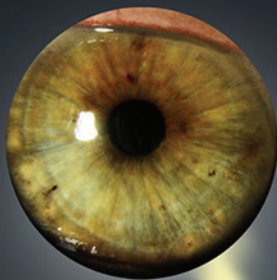
- Photographic method : Contactless
- Photographic field: 0.54 mm x 0.27 mm
- Measurement accuracy: $\pm 10 \mu\text{m}$

Comparison Function

PERSEUS application software allows the comparison of all patients so that disease progression can be properly monitored.

Analysis and Detection

- Allows for non-invasive non-contact examination.
- No risk of transmission of infectious diseases
- Pain-free examination not requiring local anaesthesia.
- Non-invasive exam of the endothelial tissue



LIFT 02

Electrical Table - Not Included



Optional Tabletops

Available Colors



PHOENIX - Patient Management Software

PERSEUS application software can be connected to the Phoenix patient management platform, allowing patient data to be saved for future review and analysis.

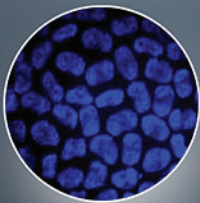
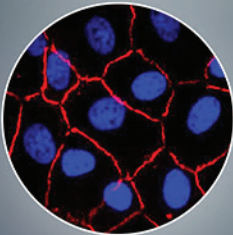
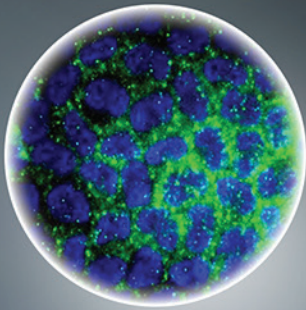
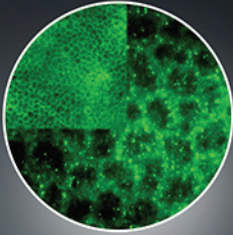
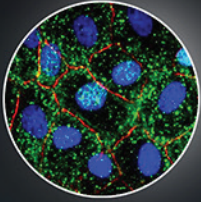
Non-invasive examination of the Endothelial Layer

PHOENIX software measures and displays a color coded map of the endothelial layer along with a set of indices based on the shape and size of cells.

Evaluation and Manual Editing

PERSEUS enables single acquisition to automatically measure and counts up to 400 cells. It can also calculate the cell density, Pleomorphism, Poimegatism and Pachymetic data values.

- Hexagonal deviation (percentage of hexagonal cells)
- Cell shape occurrence histogram.
- Shape factor



LIFT 01

Electrical Table - Not Included



Optional Tabletops

Available Colors



CS@ Endothelial Microscope
PERSEUS

1. Headrest
2. Optical Unit
3. Chinrest
4. 2 USB Ports
5. Ethernet Port
6. Phoenix Software (Included)
7. 10.4" LED Touch Screen
8. Table Top (Optional)
9. Start Button



6 7



1

2

3

8

9



Endothelial Microscope

PERSEUS



Product Specifications

Measurements

Picture Size	0.54mm x 0.27mm
Measurement Accuracy	±10 µm
LCD screen	10.4"
Dimension	250mm (w) x 448mm (l) x 437mm (h)
Weight	15 kg

Technical Data

Acquisition Mode	Non-contact, Automatic
Camera	CCD Camera
Focusing Light	LED
Magnification	180X
Pachymetry Measurement	from 400 µm - 700 µm step 10 µm increments
Fixation Target	Internal LED

Notes

Power Supply Voltage	100V-120V ac ±10% 230V-240V ac ±10% 50 Hz, 60Hz
Fuses	Mains socket unit: 5x20 mm 2x 1.25AT
Power Absorbed	200 VA
Power Cable	Three-core cable (with protective earth), conductors minimum cross-section 1 mm ²
External Plugs:	Ethernet, 2 USB
Max Power Absorption:	100 VA

