

VIEWLIGHT

POWERED BY INNOVATION

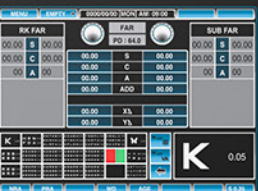
new

Digital Phoropter UDR-800P



*Tablet PC (Android)
Not included*

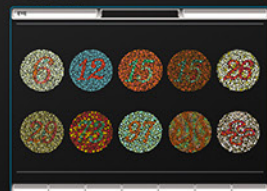
SCREEN 1



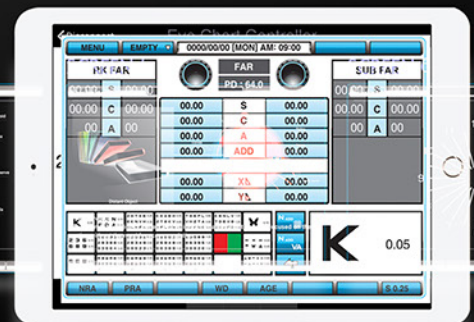
SCREEN 2

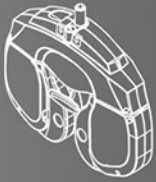


SCREEN 3



SCREEN 4





Eco Firendly Design

New anti-biotic material UDR-800P Digital Phoropter may judge the abnormal condition of the eye and may give specific figures for prescriptions that subjective refractometry may not be able to offer,

Intuitive UI measurements

It supports short distance PD (45 ~ 75mm) and short distance work (35 ~ 70cm) to make a reliable near-distance Convergence Test.

WIFI - Non-contact measurements

Lens operation is speedy, and consecutive operation of jog shuttle does not skip any data, allowing more accurate and prompt vision test possible.

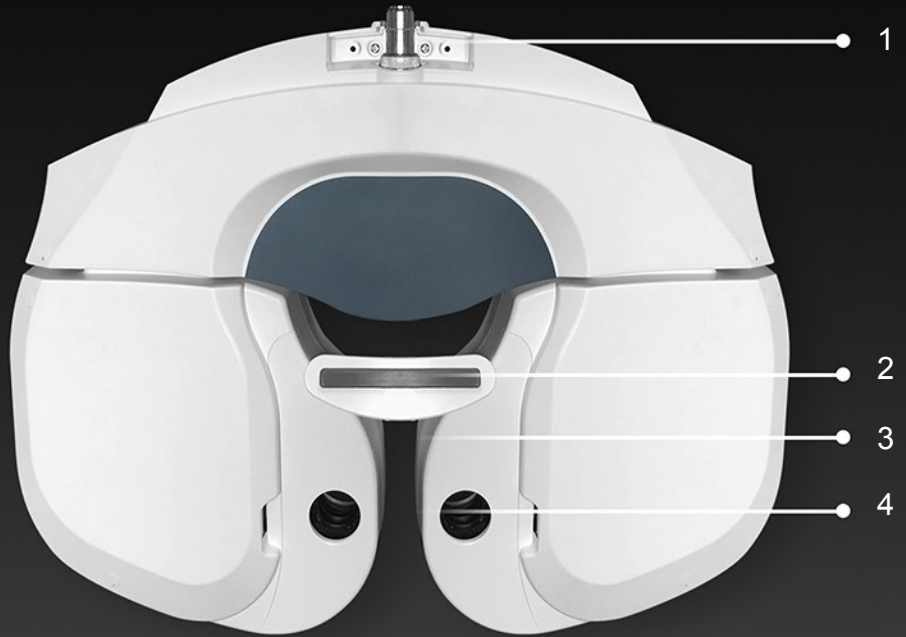
Auto-Shielding Functions

To minimize interruption for control power, an auto-shielding function works, when a lens more than $\pm 0.5D$ operates.



Product Overview

Ensures faster restarting time, faster lens change and a reduced operating noise.



1. Horizontal Controller
2. Forehead Prop
3. Face Protector
4. Test Window
5. Lever
6. Near Vision Vision Chart Bar
7. Forehead Fixing Dial VD Control Dial
8. VD Test Window

Near-Distance Vision Chart

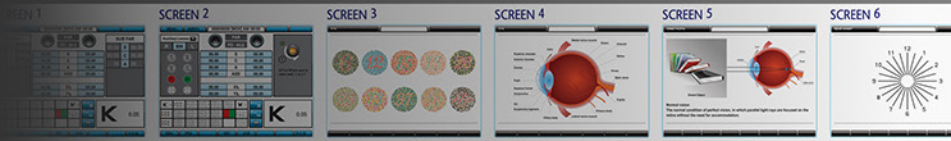
Offers a distance visual acuity chart to measurement your degree of vision loss. Simply insert the vision chart bar to the UDR-800P, while testing the smallest object that you can recognize.





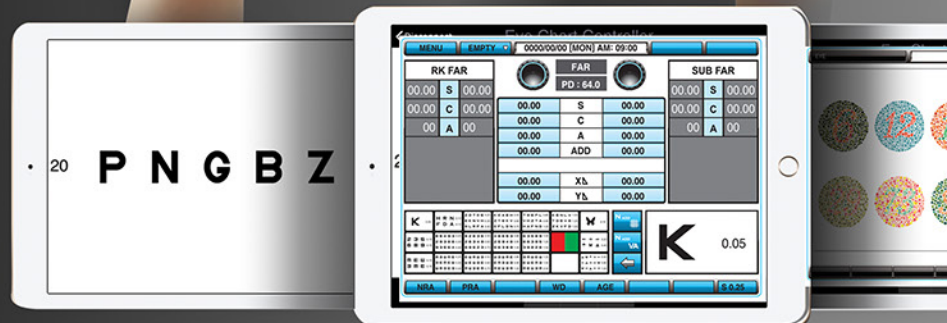
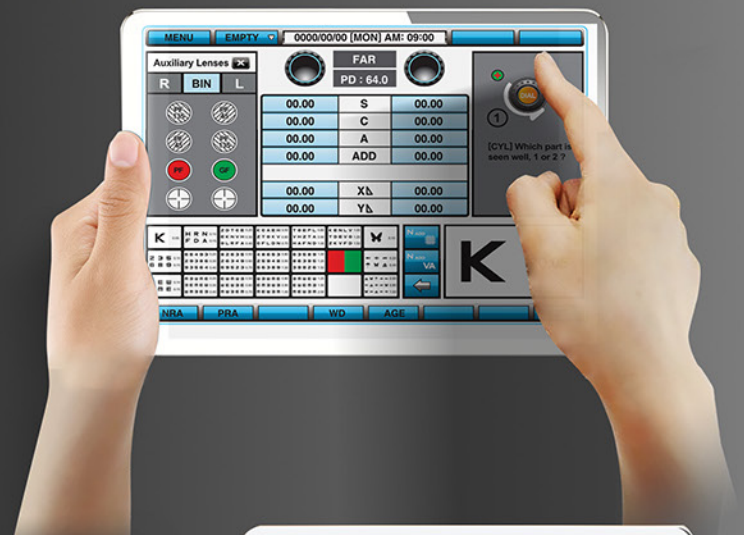
Tablet PC (Android) *Not Included*

UDR-800P gives you a compact, easy to read representation of the eye charts by displaying the charts in the palm of your hand. UDR-800P connects via Wifi, eliminating the line-of-site and/or out-of range limitations of other systems.



Visual Analytic Examination Test

- UDR-800P supports **21 system unit tests** in total.
- Near Vision Acuity With Addition
- Near Point Of Convergence Test
- Near Point Of Accommodation Test
- Near Point Addition Test Using Cross Grid
- Negative Relative Accommodation Test
- Positive Relative Accommodation Test
- Negative Relative Convergence Test
- Positive Relative Convergence Test
- Test Of Cylinder Power
- Test Of Cylinder Axis
- Red/Green Test
- Cross Cylinder Test-power Test
- Cross Cylinder Test-axis Test
- Cross Grid Test (Ver2.00 And Over)
- Horizontal Maddox Rod Test
- Vertical Maddox Rod Test
- Schober Horizontal and Vertical Test
- Horizontal and Vertical Coincidence(Aniseikonia)
- Horizontal and Vertical Phoria Test Without Fixation
- Minute Stereo : Minute Stereo Acuity Test
- Horizontal and Vertical Von Graefe Test
- Binocular Balance Test At Polarized Light Duochrome Balance





Networking System

UDR-800P could be connected with 20 competitor's products. Features a built-in Interface with Lensmeter Ref/Keratometer, Chart Projector, and LCD Projectors.

Suggested Products

1. Refraction Unit: Allegro
2. Chart & Projector ACP-900
3. Autorefractor URK-800-A
4. UDR-800P - Displayed
5. Slit Lamp CSL-10U
6. Digital Lensmeter DLR-800
7. 1x or 2x Table Top Workstation



Product Specification:

Measuring Range

Spherical Lens	-29.00 ~ +26.75D (Regular) -19.00 ~ +16.75D (Cross Cylinder, Prism Test) (Step: 0.12D / 0.25D / 0.5D / 1D / 2D / 3D) 0.00 ~ 8.75D (Step: 0.25D / 0.5D / 1D / 2D / 3D)
Cylinder Lens	0 ~ 180° (Step: 1 / 5 / 15 / 30 / 45°)
Cylinder Axis Pupil Distance	Far: 48 ~ 80 mm (Step: 0.5 / 1.0 mm) Near: 45 ~ 75 mm (Step: 0.5 / 1.0 mm)
Working Distance	35 ~ 70 cm (Step: 5 cm)
Rotary Prism	0 ~ 20 (Step: 0.1 / 0.2 / 0.5 / 1 / 2)
Cross Cylinder	Jackson Cross Cylinder 0.25D Jackson Cross Cylinder 0.50D Dual Cross Cylinder
Retinoscopy Lens	+1.5D, +2.0D (Test Distance 67cm, 50cm)

Specifications

Body	362(width) * 83(depth) * 300(height)mm,
Controller	3.5 kg 215(width) * 230 (depth) * 226(height) mm,
Junction Box	1.5 kg 266(width) * 60(depth) * 239(height) mm,
Power Supply Power Consumption	1.0 kg AC 100 ~ 240V, 50 / 60Hz 60 - 95VA

Auxiliar Lens

Open/Close Lens	Open / Close Select
Pin Hole Lens	Φ 1mm
Moddox Rod	Right eye (horizontal red), Left eye (vertical red)
Red/Green Filter	Right eye (red), Left eye (green)
Polarized Light Filter	Right eye (135°, 45°), Left eye (45°, 135°)
Separating Prism	Right eye (6 BU), Left eye (10 BI can be added to 0~5)
PD Test Lens	On / Off Select
Fixed Cross Cylinder Lens	Jackson Cross Cylinder 0.50D, Axis fixation 90°
Vision Degrees	32°