

VIEWLIGHT[®]
POWERED BY INNOVATION



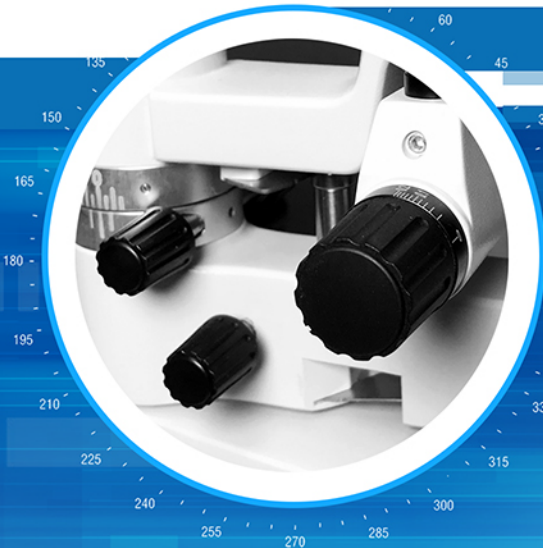
DIGITAL READY

SL-9900 *Slit Lamp*

NEW

5x





Precise Adjusters

CSO slit lamp SL-9900 5X are built with high quality optics and precise mechanical parts, feasible for all adjustable slit positions designed for comfort and a new experience while capturing and recording the patients eyes.

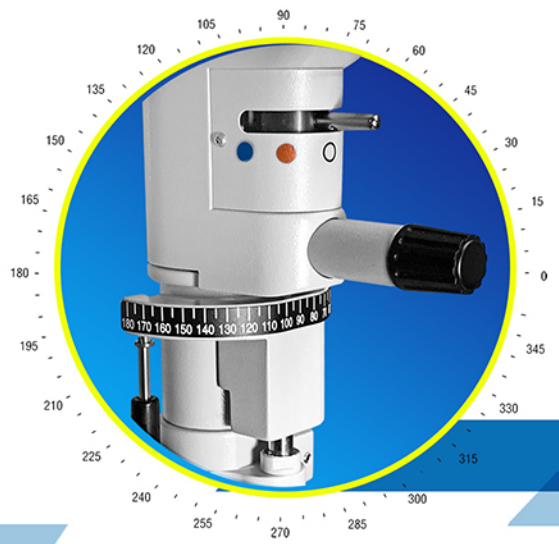


Built in Fire Button Joystick (Photo & Video)

The SL-9900 Series are built with a precise, smooth and high quality joystick. It provides lateral, longitudinal and vertical movements during all patients examinations.

Filter Insertion Control + Lever

The optical filters devices controllers can selectively transform light of different wavelengths used in many applications Available Filters: Blue, Red, Gray, Green (Red free).



↻ Lightning Card Red LED Reflex

The New SL-9900 series slit lamps are built with a tilting device where the diagonal light sources can be vertically projected up to 20° with 5° intervals. This shows to be very helpful in the horizontal optical observation gonioscopy & posterior eye examination.





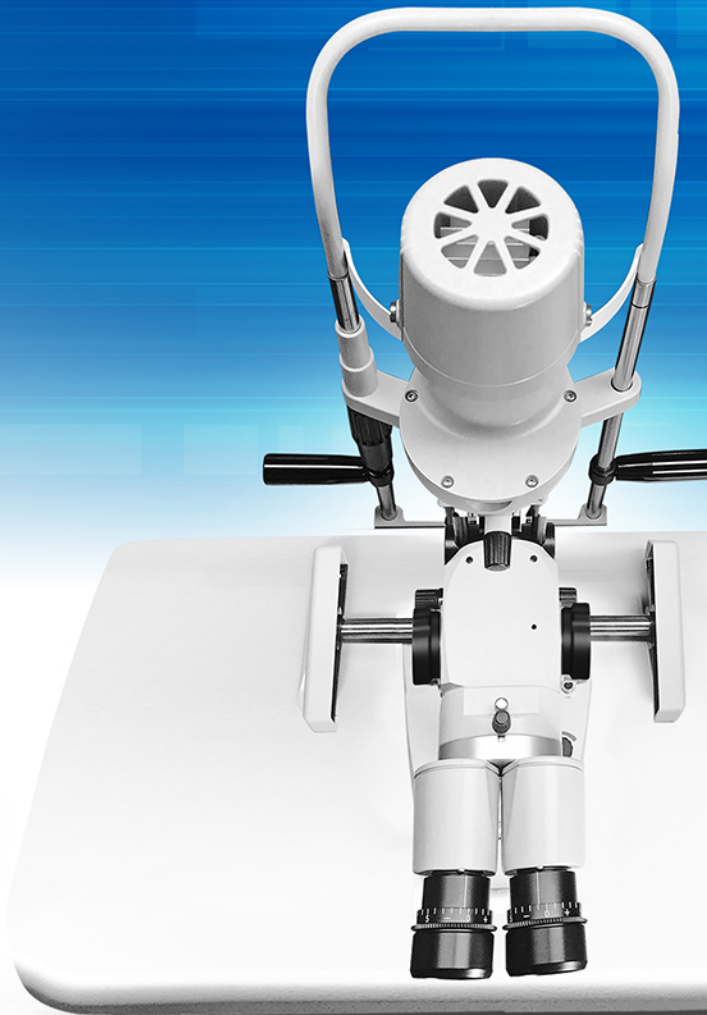
Illumination System

CSO latest slit lamps offers an LED illumination lamp designed for accurate and detailed observations. The life of the LED is longer than 50,000 working hours.



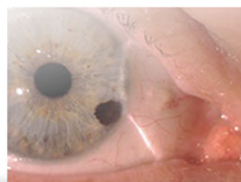
Quality Optics

CSO SL-9900 Series slit lamps provides high quality optics and excellent image quality for all ophthalmology demands. Our slit lamps features one stereoscopic microscope with Galilean system and 5 magnifications tuners with complete screwout eyepieces.



HR CS[®] Digital Camera

Designed for SL-9900 5x



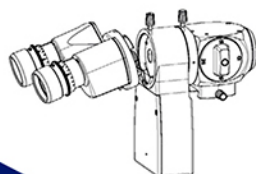
Compatibility

Widely compatible to different brand model slit lamps.



Easy USB Transfer

One Power cable and data line will produce data transmission quickly and easily. Neither hardware nor computer configuring is required.



User-Friendly Interface

Simple design style and friendly interface help operators handle it quickly and efficiently



Centralized Management

Professional patient information management platform is important to conduct centralized management for patient. This platform supports integrated function print.



MADE IN ITALY

Phoenix

(Software Included)

IMAX 5

IMAGING SYSTEM

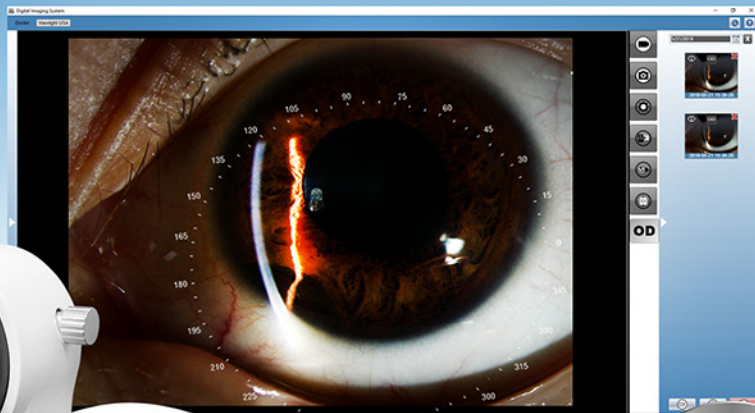
Wireless Button

2.4Hz wireless solution,
no aiming, fast reaction,
and stable performance.
3V Energizer Battery Included



Smart Auto Exposure

Professional solution makes the camera
exposure, more accurate and intelligent.



- 5 megapixel resolution
- 1/2.5 inch CMOS
- High definition images and videos

Centralized Management



Professional patient information management platform is important to conduct centralized management for patient. This platform supports integrated function print.



All CSO digital ready slit lamps includes a Phoenix software technology which manages to collect data, measurements, captures quality photos and video for all conducted examinations. Also features an image comparison, drawing tools, user calibration sources, network database, and language converters.

Monitor *Optional*



TABLE TOPS
(Not Included)



Model: 100710807

Model: 100710805



Optional Tabletops
Available Colors



Accessory Drawer



Model: 100710803

LIFT Electrical Tables (LIFT-01 & LIFT-02)

CSO sturdy and secured instrument table features an adjustable height sequence designed for 1-2 optical instrument configurations.

Table Tops

All CSO surfaces of these tables are designed to be very rigid with minimum deflection so that the alignment of optical elements remains stable over time



Model: 100710801

Canon Cameras

CSO digital ready slit lamps offers an optional Canon EOS Rebel Series cameras designed to capture photos and videos with its high resolution megapixel sensors and precise focus.



CANON - EOS Rebel T Series



Digital Adaptors VL-Z8



Optional Adaptors

Viewlight USA slit lamp are designed to incorporate optional accessories such as the beam splitter and camera adaptor so that it can be attached with the stylish Canon professional camera.



Tonomter Z-800 *Optional*

The Z-800 tonometer provides extreme measurement accuracy. All values are directly readable on the instrument and without any standardization or calibration difficulties.



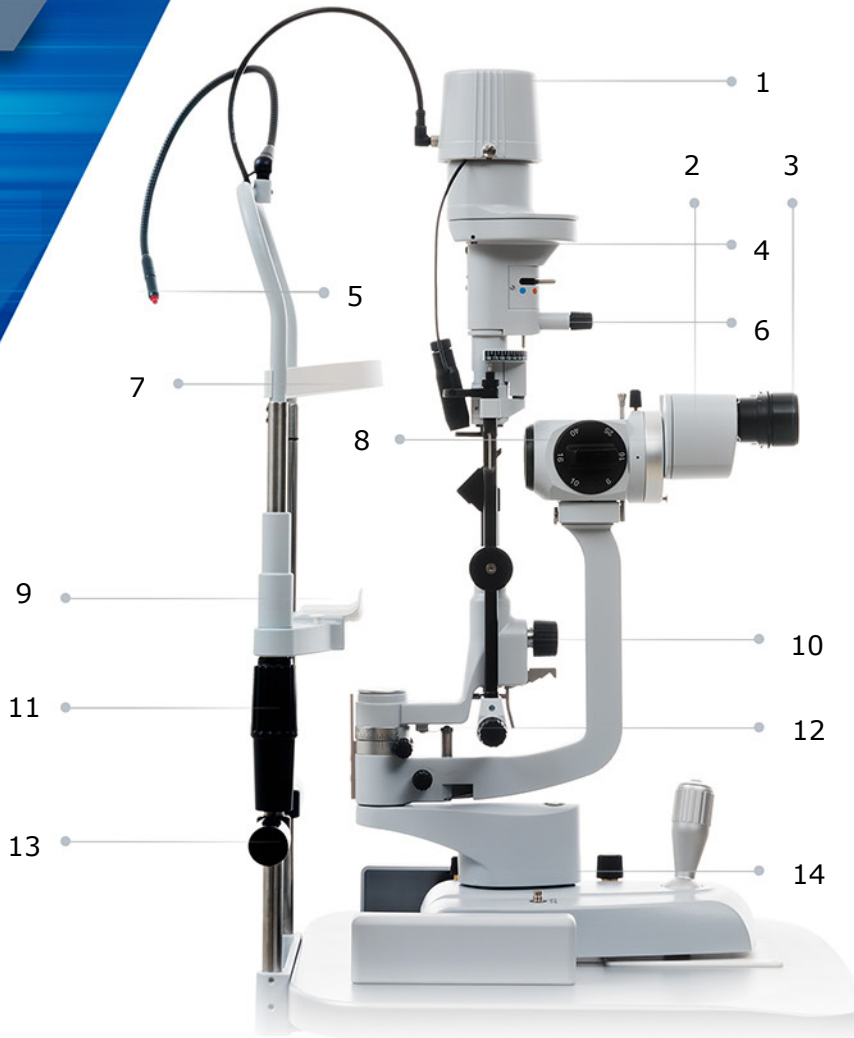
Tonomter A-900 *Optional*

The A-900 is an accessory to any slit lamp model, used for measuring ocular pressure, amount of force needed to temporarily flatten part of your cornea and to prevent risk of developing glaucoma.



Digital Ready Slit Lamps

SL-9900 5X



1. Light Bulb / LED Cover
2. Microscope
3. Extractable Eyepieces
4. Digital Video Camera Splitter
5. Fixation Point
6. Slit Height Adjuster / Tuner
7. Head Rest
8. 5X Magnification Tuner
9. Chin Rest
10. Slit Projector Head
11. Chinrest Height Adjusting Ring Nut
12. Slit Width Adjusting Knobs
13. Patient's Handle
14. Orthogonally Moving Base
15. Wheel Shields
16. Built in Fire Button Joystick (Photo & Video)





Digital Ready Slit Lamp
SL-9900
5X

Product Specifications

Technical Data

Slit Projection	1X
Slit Width (setting continuous)	0 - 12 mm
Slit length (setting continuous)	1- 12 mm
Slit Length (max)	12 mm
Apertures	12, 9, 5, 1, 0.2 mm
Filters	Blue, Red, Gray, Green (Red free)
Light Diffuser	Light Diffuser
Background Light	Only with Digital Vision HR
Slit Rotation	± 90° continuous (Tabo system)
Slit Angle	Variable 0° 5° 10° 15° 20°
Rotation Interval - Slit projection	±90°, angular scale, reference on 0° and ±10°
Working distance	80 mm
Joystick Push Button	Only with Digital Vision HR
Left / Right Detection	Only with Digital Vision HR
Voltage	15V DC 1A
Light Source	White LED
Brightness	248000 LUX continuous adjustment
Dimensions (HxWxD)	675 x 313 x 335mm
Weight	7 kg

Type	Convergent	Galileian convergent with magnification change system		Galileian convergent with variable magnification
Eyepiece Convergence Angle	13°			6°
Eyepieces	10x	12,5x	12,5x	12,5x
Eyepiece adjustment	±8 D.			
Magnifications	10x 16x	10x 16x 25x	6x 10x 16x 25x 40x	7X 30X
Field of View		8,5x 14,8x 25,6x	5,6x 8,5x 14,8x 25,6x 39,3x	
Interpupillary distance	18,5mm 12mm	26mm to 8,5mm	41mm to 5,7mm	30mm to 7,4mm
Barrier filter	51,5mm to 87mm	50mm to 80mm		
Barrier filter	Yellow			



System Requirements (Version Digital HR)

PC:	4 GB RAM
Video Card:	1 GB RAM
Resolution:	1024 x 768 pixels
USB	3.0 Type A
Operating System	Windows XP, Windows 7 and Windows 10 (32/64 bit).