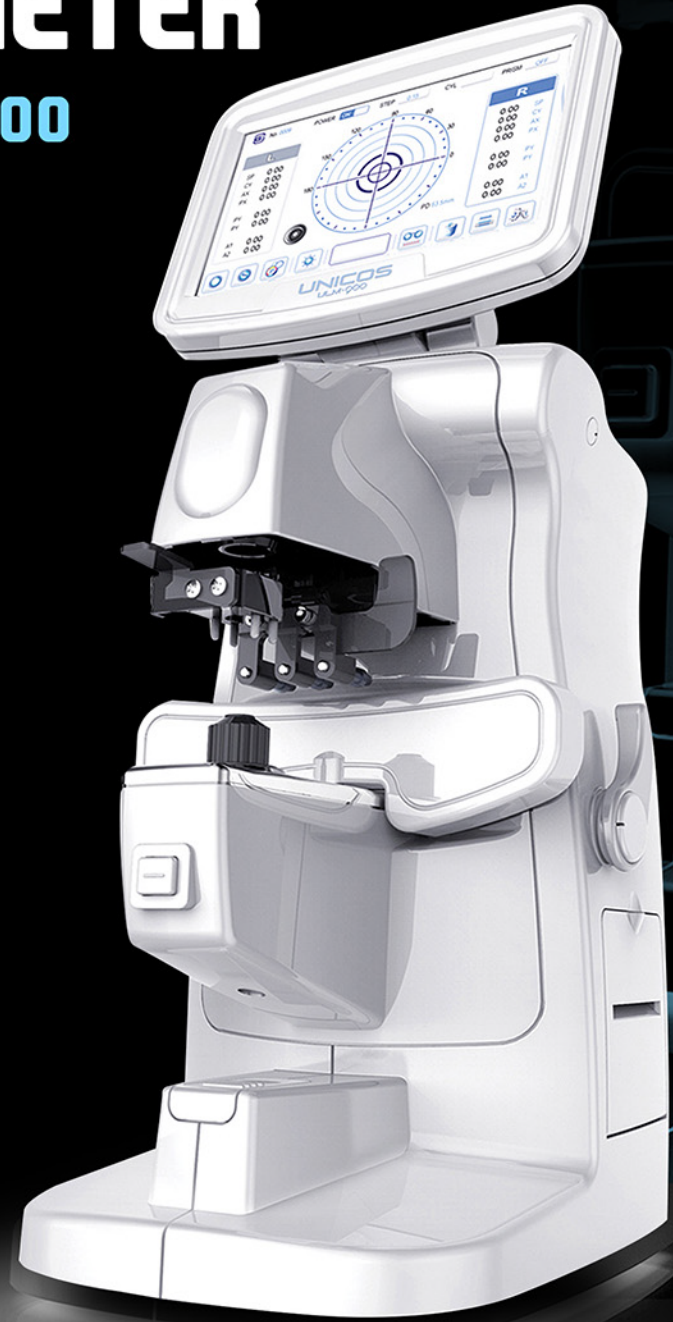




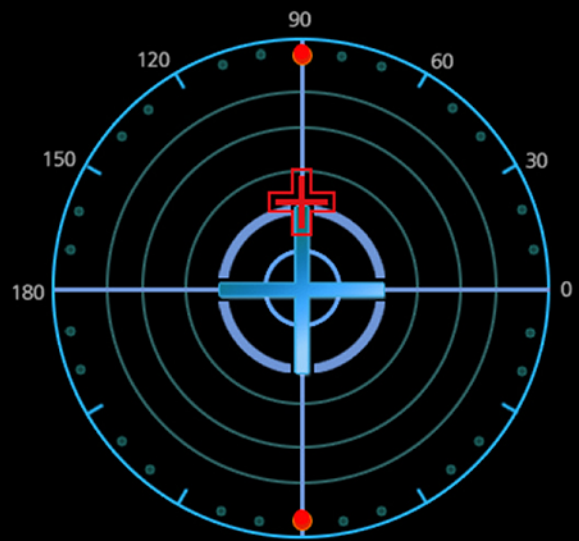
New **DIGITAL**
LENSMETER

ULM-900



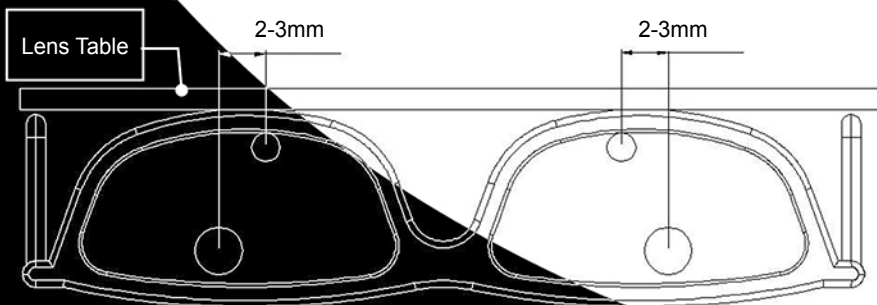
About ULM-900

The NEW digital lensmeter ULM-900 is designed to measure refractive power and prism power of a lens of eyeglasses and contact lenses, to orientate and mark uncut lenses, and to verify the correct mounting of lenses in glasses frames.



Automatic Detection

A single vision lens or Progressive lens could be detected automatically and switched quickly to corresponding measurement mode to measure various lenses without adjusting ABBE number.



PD & UV Measurements

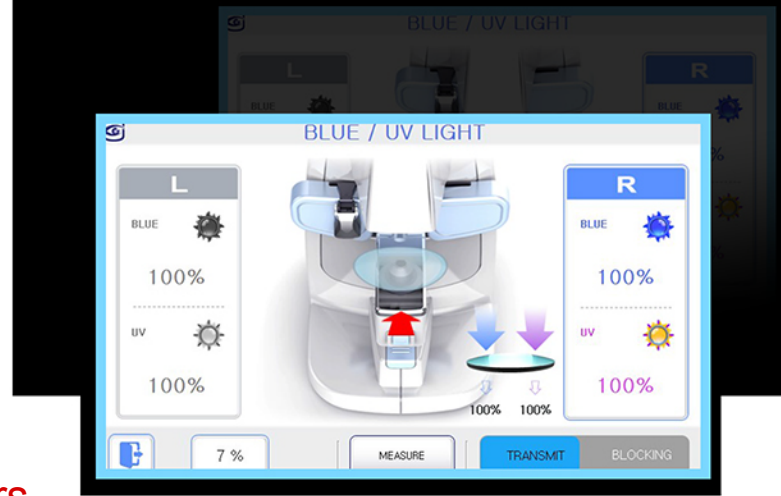
Digital lensmeter ULM-900 serves a wide measurement range (-25D ~ +25D) automatically measure most refraction, astigmatism, prism, progressive bifocal, trifocal, hard and soft contact lenses.





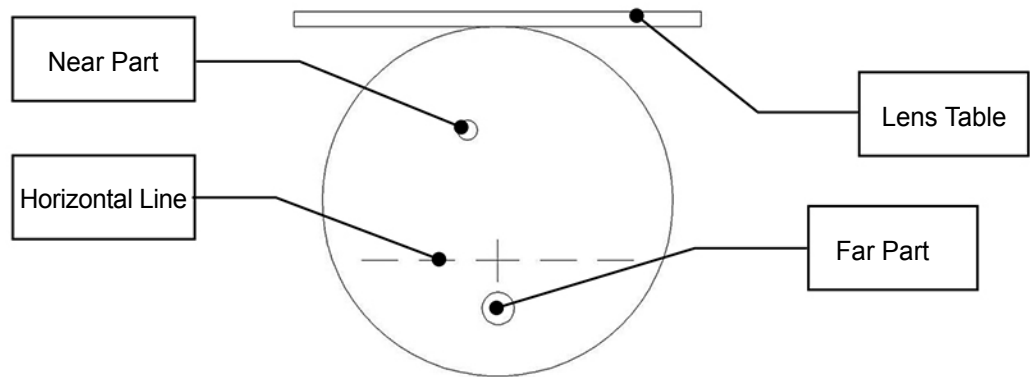
Accurate Range

UV & Blue light measurement and penetration ratio could be measured simply and accurately by easy operations and shows a result in the range of 0% to 100% for a various lenses including sunglasses.



Lens Detectors

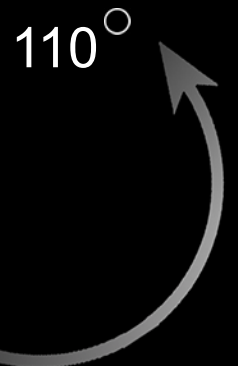
ULM-900 has a built-in accurate lens detectors readers with a wide measurements of double (triple) vision lens and optical center markers for precise reading. (ink cartridge included)



Ergonomic Design

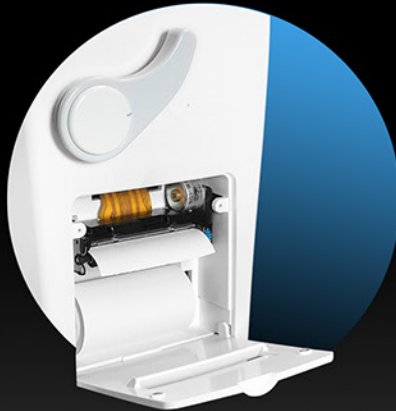
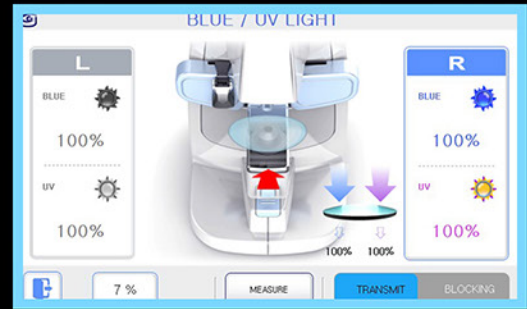
The ULM-900 features 110° tilted full 7 inch LCD touch monitor display with full-color touch panel, designed to view till 110° for user convenience. It allows noticeable icons and Intuitive and familiar GUI provide an efficient operation without a specialized knowledge.

Flexible adjustable lens reader (without the use ABBE number) can show the centering by diagram marks on the screen and it can help to adjust the optical center of lens quickly.



Measurement Interface

The ULM-900 interface showcases the ability to modify the systems parameter to change any measurement modes, auto saved measuring and printing out all data.



Thermal Printer

All PD measurements Lensmeters built-in high-speed thermal printer, auto memory data saving and replaceable printing paper (included)



- (1) Indication step
- (2) CYL mode
- (3) Prism mode
- (4) Value Window
- (5) SPH power
- (6) Prism power
- (7) Check pattern screen
- (8) Normal/Progressive mode
- (9) UV/BL measurement mode
- (10) Single lens button
- (11) Measurement button
- (12) PD measurement screen
- (13) Initializing button
- (14) Print button
- (15) SETUP mode button
- (16) Prism position
- (17) Prism concentric circle
- (18) Axis mark

ULM-900

DIGITAL LENSMETER



- 1. Lens Holder Lever
- 2. Lens Support
- 3. USB Connector
- 4. Power Switch
- 5. 7" Touch Screen Monitor
- 6. Lens Fixing Frame
- 7. Measurement Button
- 8. Lens Table
- 9. Read Button
- 10. Lens Table Lever
- 11. Thermal Printer



DIGITAL LENSMETER

ULM-900

Refractometry

- Sphere Power: 0.00D- +25.00D (VD 12mm)
Increment: 0.01/0.06/0/12/0/25D
- Cylinder Power: (CYL) 0.00~±10.00D
Increment: 0.01/0.06/0/12/0/25D From: -/+/-
- Axis: 1° - 180° (1° STEPS)
- Additional Power: 0.00~+10.00D
Increment: 0.01/0.06/0/12/0/25D
- Prism Power: 0.00Δ-10.00Δ
Increment: 0.01/0.06/0/12/0/25D
- Pupil Distance: 10~80MM
- Lens Diameter: 16 ~ 100mm
- Lens Type: Single lens / Bifocal lens
Three focal lens / Progressive

Other

- Data Out: RS-232C, USB
- Internal Printer: Thermal Printer
- Display: 7.0 inch Color LCD Monitor Touchscreen
- Permanent Shock: 10g / 6ms
- Oscillate (Sine Curve): 10Hz ~ 500Hz, 0.5g
- Power Supply: AC220V 50Hz
- Power Consumption: 45 ~ 65VA
- Dimensions: 175mm(W) x 255.5mm(D) x 478mm(H)
- Weight: 5.25Kg

Product SPECIFICATIONS