

VIEWLIGHT
POWERED BY INNOVATION

SONY
PROFESSIONAL

Inami **D**IGITAL
CAMERA

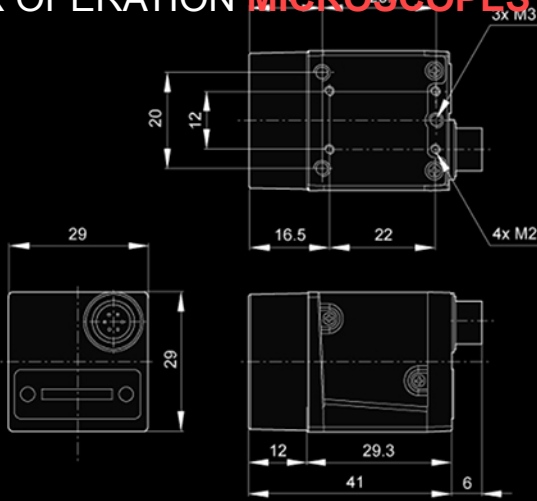
FOR OPERATION **MICROSCOPES**



USB[®]
VISION

Basler

FOR OPERATION **MICROSCOPES**



29 mm



29 mm

USB[®]
VISION **SONY**

Basler Digital USB 3.0 cameras offers Sony MX265 color CMOS sensor delivers 55 frames per second at 3.2 MP resolution.



High Quality and Performance

Basler color cameras are equipped with an IR cut filter. Camera's nominal operating voltage is 5 VDCT Basler digital cameras are marked a breakthrough of the 29x29mm foot print familiar from the analog world. This "sugar cube" format has firmly established itself and can be found in all Inami technology.

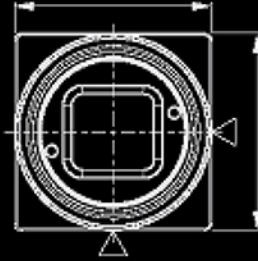
Model: 13S2C

FOR OPERATION **MICROSCOPES**



44 mm

41 mm



SONY

Digital Video Camera

Inami's ergonomic design of digital camera Model 13S2C provides a clear and detailed images and videos while observing all patients eye.

Compact and Affordable

Inami digital camera model 13S2C, is an easy to use and cost saving USB camera specifically for operation microscopes devices such as L-0990 and L-0990-A.



Easy and Safe Transfer

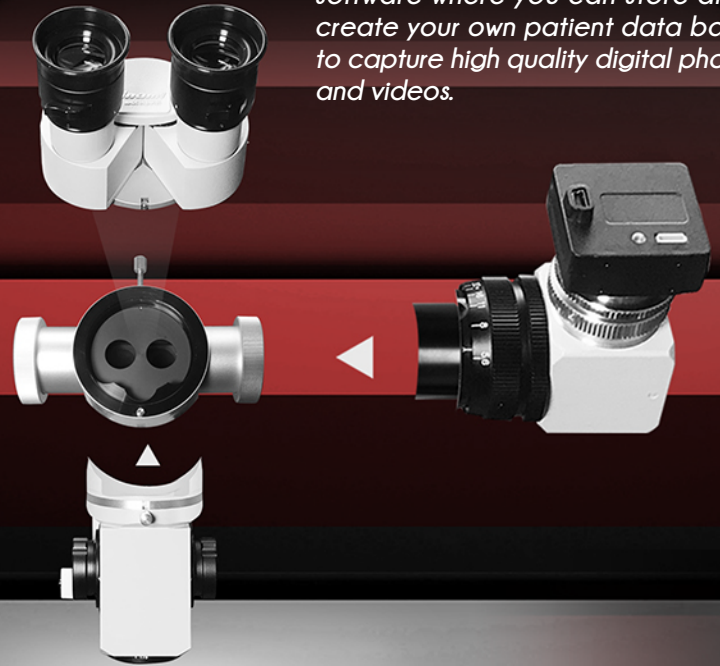
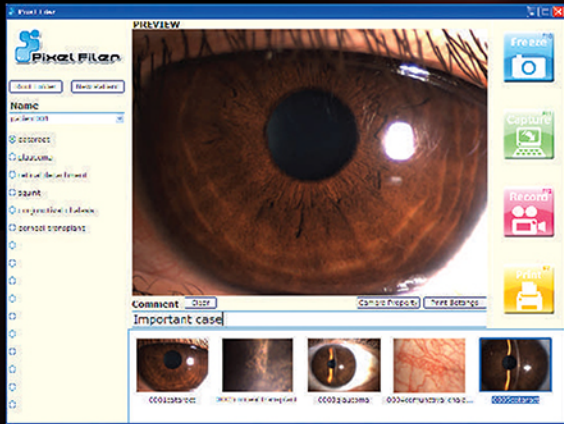
USB 3.0 camera features a Sony ICX445 color CMOS sensor, has a resolution of 1296 × 964 , sufficient data transfer and 2 GB RAM or more for all your patients documentations.





Included Interactive Software

Inami microscopes offers an optional USB digital camera, with a unique software where you can store and create your own patient data base to capture high quality digital photos and videos.



Microscopes Accessories

This ergonomic design microscope features an optional C mount system, beam splitter, assistant binocular microscope, and video USB camera.



Beam Splitter
Devices

All operation microscopes features an optional beam splitter that can be easily assembled and it allows you to attached many other Inami optional accessories.



Video Camera Adaptor
C-Mount F=70mm

This optional video digital camera adapter is designed for a easy and quick assembly access while adding the USB digital camera.



SONY *Specifications*

- Resolution 2064 X 1544 (Full Resolution)
- Sensor Type SONY Imx265lqr-c, Progressive Scan Cmos, Global Shutter
- Optical Size 1/1.8"
- Effective Sensor Diagonal 8.9 Mm
- Pixel Size 3.45 Mm X 3.45 Mm
- Frame Rate 55 Fps
- Mono Color Color
- Image Data Interface USB 3.0, Nominal Max. 5 Gbit/S (Superspeed)
- Camera Power Nominal 5 Vdc Supplied Usb 3.0 Port
- Lens Mount C-mount
- Lens Size 29.3 Mm X 29 Mm X 29 Mm
- Weight <80g
- Software Software Suite (Version 4.0 Or Higher)
Available For Windows, Linux X86, Linux Arm, And Os X
- Accessories Camera Lenses
- Conformity CE, RoHS, GenICam, IP30, FCC, USB3 Vision, UL, KC



Model: 13S2C

FOR OPERATION **MICROSCOPES**

Specifications

SONY



- Frame Rate: Cross-angle Stereo Vision
- Lens Mount: CS-mount
- Pixel Size: 3.75
- Resolution: 1296 × 964
- Sensor Type: CCD
- Sensor Format: 1/3"
- ADC: 12-bit
- Chroma: Color
- Megapixels: 1.3
- Readout Method: Global shutter
- Sensor Name: Sony ICX445
- Required Accessories: Lens, Cable, Host Adapter (USB)
- Auxiliary Output: 3.3 V, 150 mA maximum
- Interface: USB 2.0
- Weight: 37 grams
- Dimensions: 25.5 mm × 44 mm × 41 mm
- Power Consumption: 2 W
- Hard Drive: 200 MB hard drive space
- RAM: 2 GB RAM or more
- Port: USB 2.0 Port
- Operating System: Windows or Linux (32-bit or 64-bit)
- CPU: 3.1 GHz or equivalent CPU



Inami