

VIEWLIGHT

POWERED BY INNOVATION

NEW
Auto Refractor | Keratometer
URK-700A



Product Specifications

About URK-700A



URK-700A features measurement data and various functional program shown color thru a high clear and precise 7 inch Touch Wide LCD Screen. URK-700A covers a wide measurement range, from -25D to +22D.



1. Head Rest
2. Measurement Window
3. Chin Rest
4. Chin Adjuster Lever
5. Touch Screen Monitor
6. Auto Save / Printer
7. Measurement Button
8. Stage Holding Knob
9. Joystick

Gun-Type Joystick

The **URK-700A** offer the latest technology with wide range measurements including an ergonomic gun-type joystick which provides an easy grip feeling, allows a fast measurement image shooting, automatic chinrest mechanisms, and multi level locking system.

WIDE RANGE Measurements

-25D to +22D



Auto Refractor / Keratometer

The Auto Refractor / Keratometer **URK-700A** is used to determine the initial objective refractive values for a patient's eye in the workflow of refraction to determine the optical prescriptions for myopia, hyperopia and astigmatism.

Ergonomic **DESIGN**

Contact Lens Measurements

Not only the usual refractometry and keratometry, but also corneal diameter and base curve of contact lens can be measured with this one instrument.

URK-700A's measurements of eye, prescriptions for glasses and contact lenses can be made more efficiently.



Model Eye

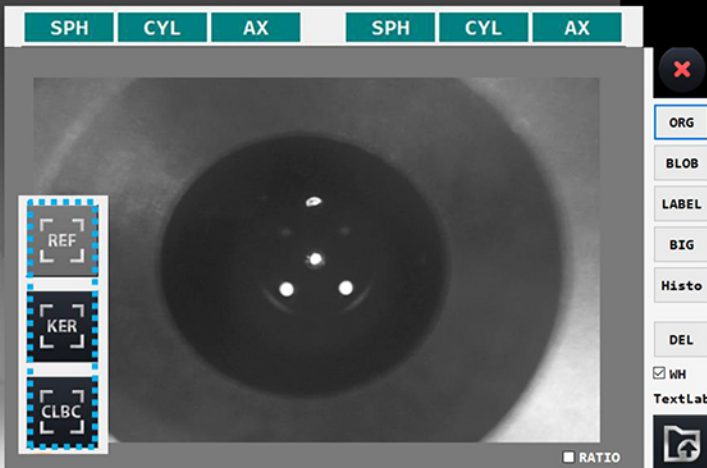
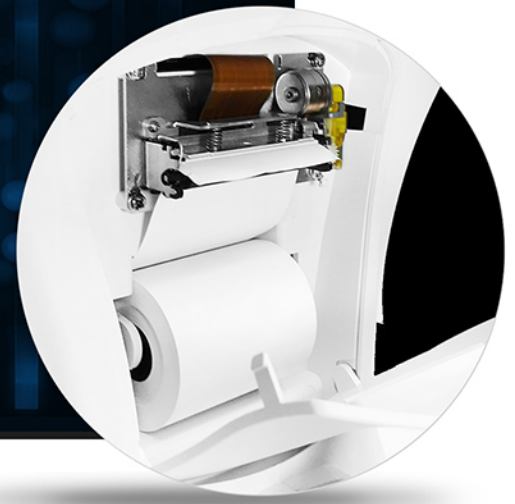
URK-700A offers a ocular imaging eye model which incorporates an anterior chamber, crystalline lens, and fundus. Model provides superior demonstration and training of common ophthalmic imaging devices.



Data Center

Auto Save / Printer

All URK-700A test result are transferred to it's built-in high-speed thermal printer, auto memory data saving and replaceable printing paper. (included)



Communication Interface

- Effective Management of Measurement Data
- Support Various Mode of Measurements
- VD (Vertex Distance) results
- Displays SPH, CYL., AXIS, R1, R2, A2
- Illumination Sensor
- Convenient PD Measurement (Pupil Distance)
- Automatic Chinrest with Adjusting Mechanism
- Multi Levels Locking System

0.0

+0.00

+0.00

0.0

Electrical Sources

1. USB Connector
2. RS-232 Connector
3. Power IN LET
4. Fuse: TA2H 250V



1

2

3

4

Product SPECIFICATIONS

Included Accessories

- Power Supply Cable
- Model Eye
- Printing Paper
- Dust cover
- Product Manual

Refractometry

- Vertex Distance(VD) 0.0, 10.0, 12.0, 13.5, 15.0mm
- Sphere(SPH) -25.00 ~ +22D (VD 12mm) Unit : 0.12 / 0.25 D
- Cylinder(CYL) Axis(AX) 0.00~±10.00D Unit : 0.12 / 0.25 D
- Cylinder form 1~180 Unit : 1
- Pupil Distance(PD) -, +, MIX
- Minimum Pupil 10~85mm
- Diameter Ø 2.0mm

Keratometer

- Radius of Curvature 5.0~10.2mm Unit : 0.01mm
- Corneal Power 33.00~67.50D Unit : 0.12/ 0.25 D
- Corneal Astigmatism 0.00~-15.00D Unit : 0.12/ 0.25 D
- Axis 1~180 Unit : 1
- Corneal Diameter 2.0~12.00mm Unit : 0.01mm

Other:

- Storage Memory 10 measurement each eyes
- Internal Printer Thermal printer
- Display 7.0 inch TFT COLOR LCD Monitor, Touch
- Chin rest movement Max 65mm
- Power supply AC100V ~ 240V, 50/60Hz
- Power consumption 60 - 90VA
- Dimension 248mm(W) x 476mm(D) x 473mm(H)
- Weight 21kg