

## Slit Lamp BD 900®

### YELLOW FILTER



For good contrast enhancement when using Fluoresceine, simply turn the filter positioned at the front of the microscope.

### INSTRUMENT BASE



A smoothly operating instrument base with a continuously adjustable illumination control conveniently situated next to the joystick.

### ILLUMINATION

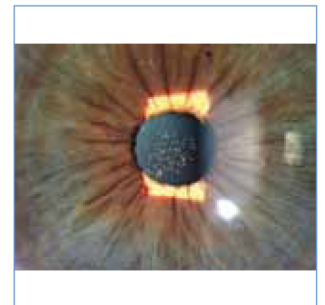


With a single support column, the BD 900 allows optimal access to the patient. The halogen bulb gives up to 300,000 Lux illumination. The slit can be adjusted from 0–14 mm. UV and IR filters are built-in. Blue and grey filters can be inserted as needed.

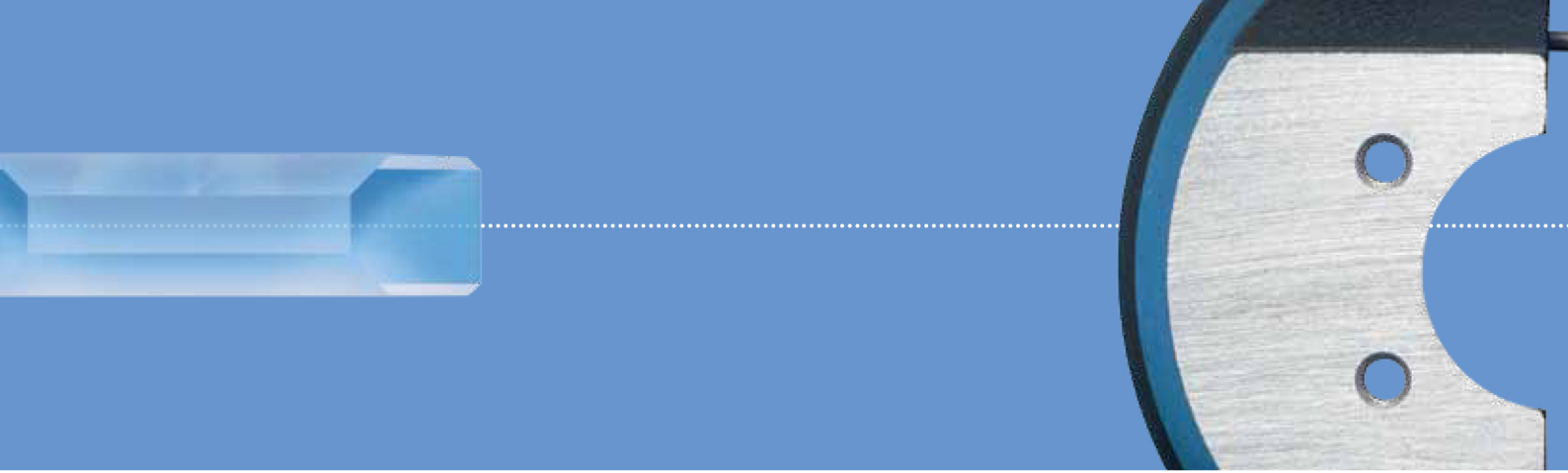
### VIDEO PORT



The image is diverted to the camera by means of a small prism permanently placed in the microscope. The video port on the BD 900 is optimised for use with the CM 900, but will also take any other small C-mount camera.



There are several significant differences between the BD 900 and the other slit lamps of the HAAG-STREIT range – although the underlying philosophy of quality has been retained. Halogen is standard, there is a 14 mm slit and a yellow filter – all aspects considered important with regard to contact lens fitting and observation of the corneal surface.



## Optimal performance – for the anterior segment



The BD 900 is optimised for the opticians, optometrists, contact lens practitioners and ophthalmologists specialising in the anterior segment. It is also ideal for non-ophthalmologist emergency rooms. Video may be fitted through a built-in video port. Standard magnification is 10x and 16x – by the flip of a lever placed just beneath the microscope.

