

Inami

Halogen & LED Series

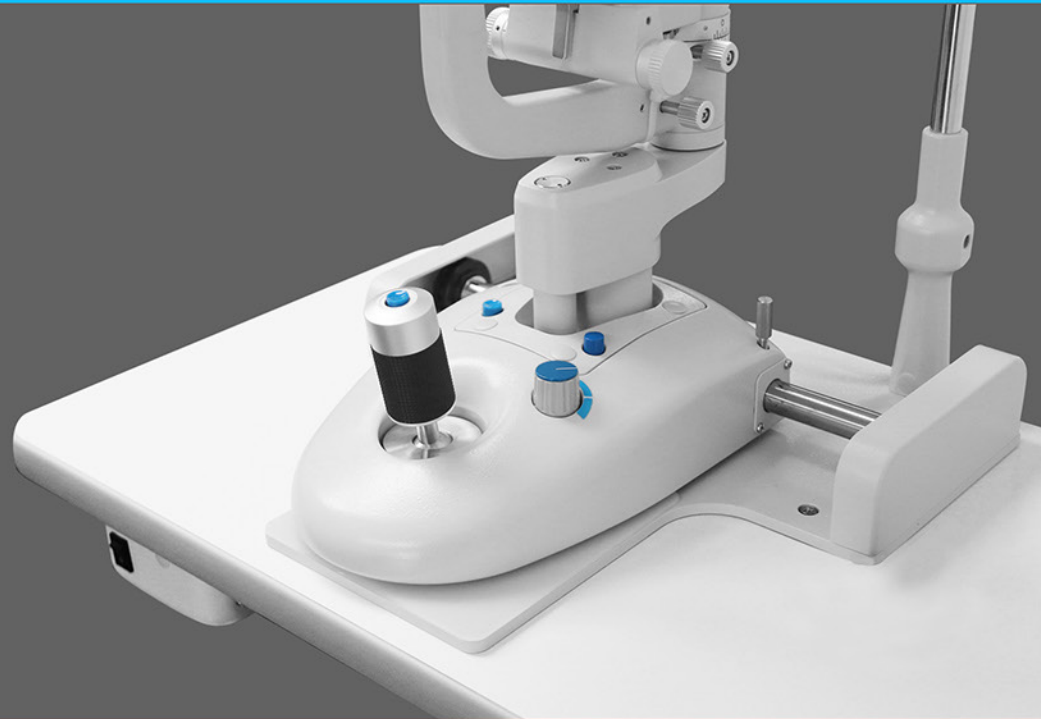
L-0229-E





Slide Joystick Controller

Inami's Slit Lamps are built with a precise, smooth and high quality joystick. The L-0229-E provides a lateral, longitudinal and vertical movements during all patients examinations.



High Quality Optics Binoculars

Inami's Slit lamp L-0229-E provides a convergent type binocular microscope for high quality optics and excellent image quality for all ophthalmology demands.



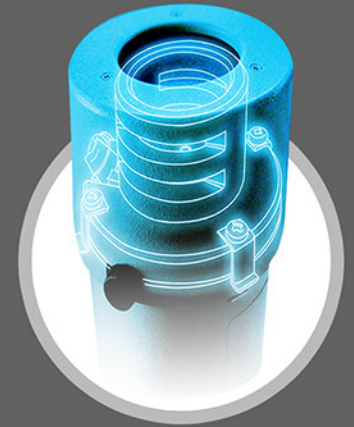
5 Step Magnification Head Type

The L-0229-E power focusing and adjustable 5 steps magnification ranges (6x, 10x, 16, 25x, 40x), has a pupillary adjustment of 53-83mm slit width of 0-14mm.



Slit Lamp L-0229-E Illumination

Inami's Slit Lamps Illumination features a built-in yellow filter for clearer view and energy saving light source generating no UV and less heat. L-0229-E enables you to optically change the illumination field up to 14mm by single click actions.



LED Background Illumination

L-0229-E slit lamps features the LED background illumination system which allows you to take clear detailed and bright images of slight light.



Slit Lamp Accessories

Digital Video Camera

L-0541 DC offers a user friendly technology of assembling Slit Lamp accessories. This will allow all user to easily remove and add any additional parts with security and reliability.



Precise Measurement Accessories

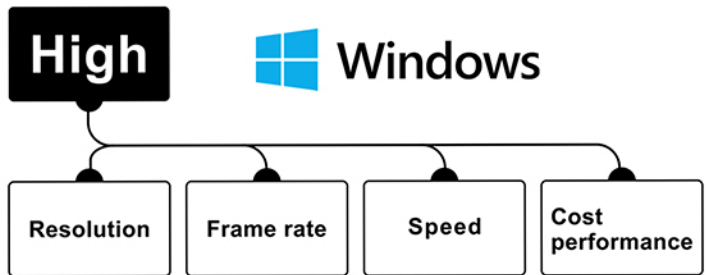
L-0229-E Slit Lamps offers optional quality accessories such as the L-5110 tonometers and the digital video camera which are designed to be mounted and combined with other manufacturers equipments.

Tonometers

Accuracy

L-5110 is an accessory to Slit Lamp devices used for measuring ocular pressure. The applanation measuring cone measures the amount of force needed to temporarily flatten part of your cornea, to prevent risk of developing glaucoma



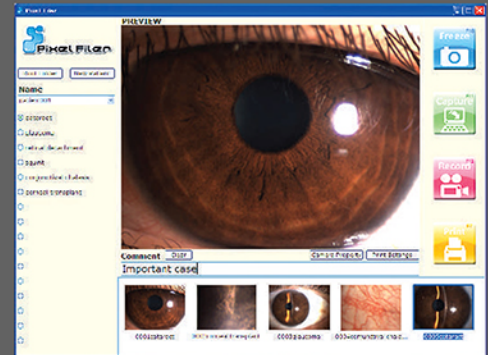


Digital Video Camera Device

The L-0541DC is an easy to use and cost saving USB camera for Slit Lamps devices offered with a high resolution detailed images and 15fps smooth video recordings.



Inami's Pixel Filer 3.0 is an easy to use software for taking fine and detailed digital images, capturing videos, and sorting files. Inami's software runs in all Windows XP, 7, 8, and 10 (Included).



Data Transfer USB Connection

L-0541 DC has a high speed data transfer (5Gbps) of the newest serial bus which assures a stable connection between the camera and your PC



CANON

Digital Video Camera

Inami Slit Lamps offers an optional USB digital camera, with a unique software where you can store and create your own patient data base to capture high resolution photos and quality videos.



Beam Splitter

For CANON Cameras

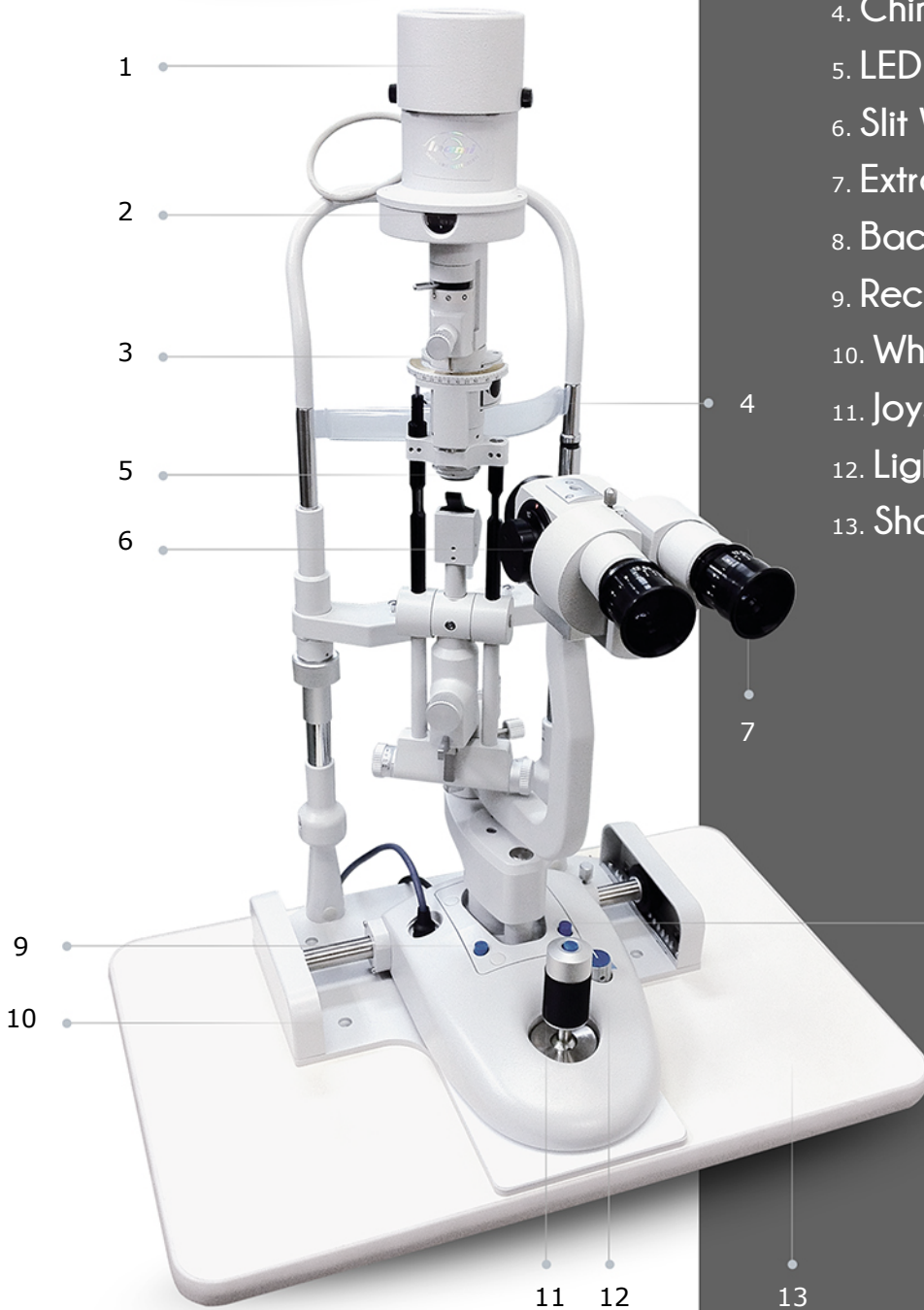
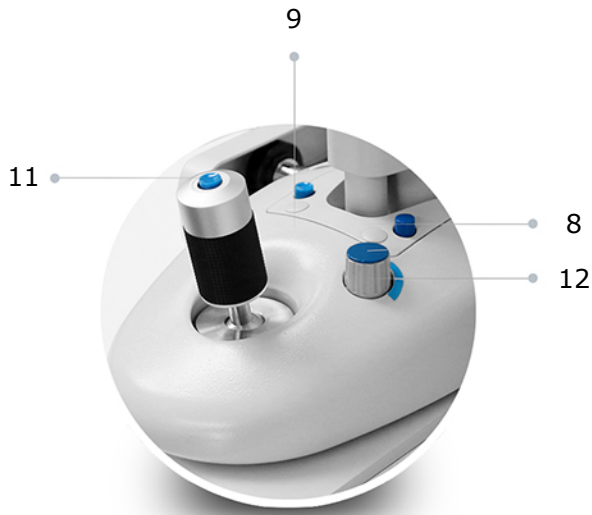


Slit lamps are designed to incorporate optional accessories such as the beam splitter and camera adaptor VL-Z8, so that it can be attached with the stylish CANON professional camera.

Inami

Halogen & LED Series

SLIT LAMPS



1. Light Bulb / LED or Halogen Cover
2. Digital Video Camera Splitter
3. Slit Height Adjuster / Tuner
4. Chin-rest
5. LED Background Illumination
6. Slit Width Adjusting Knobs
7. Extractable Microscope
8. Background Illumination Switch
9. Record Start / Stop
10. Wheel Shields
11. Joystick (Camera Freeze & Capture)
12. Light Intensity Controller
13. Shaped Tabletop

Product Specifications



Measurements

Microscope Head Type	Convergent Type Binocular Microscope
Magnification Changer	5 Steps by Drum Rotation
Stereo Angle	12
Magnification Ratio (Field of View)	6x (38mm) 10x (24mm) 16x (15mm) 25x (9mm) 40x (6mm)
Slit Width	0-14mm
Filters	Cobalt Blue, Heat Absorption, Red-Free, 1/2 ND, Yellow
Dimensions	LED: 550 (W) x 400 (D) x 660 (H) mm HALOGEN: 550 (W) x 400 (D) x 690 (H) mm
Weight	23kgs
Pupillary Adjustment	53 - 83 mm
Focus Distance	106 mm

Slit Illumination

Light Source	LED: (White) 14VDC 1A Halogen: Lamp Bulb 12V/50W (L016H1)
Background Illumination	15VDC 0.1A
Slit Width	0-14mm (0-8mm SI Grande position 2)
Aperture Diameter	0.3, 1.4, 4.2, 5.5, 8.3, 14mm
Slit Length	0-14mm (0-8mm SI Grande position 2)
Slit Rotation	90
Slit Inclination	0° - 5° - 10° - 15° - 20°
Max Intensity	58,000 Lux

Notes

Image Sensor Type	Sony Progressive Scan
Resolution	1280 (H) x 960 (V)
Pixel Size	3.75µm x 3.75µm
Chin-rest Vertical Movement	75mm
Power Consumption	LED: 25VA & Halogen: 80VA