

VIEWLIGHT[®]
POWERED BY INNOVATION



Inami

Slit Lamps



Halogen & LED Series

L-0189

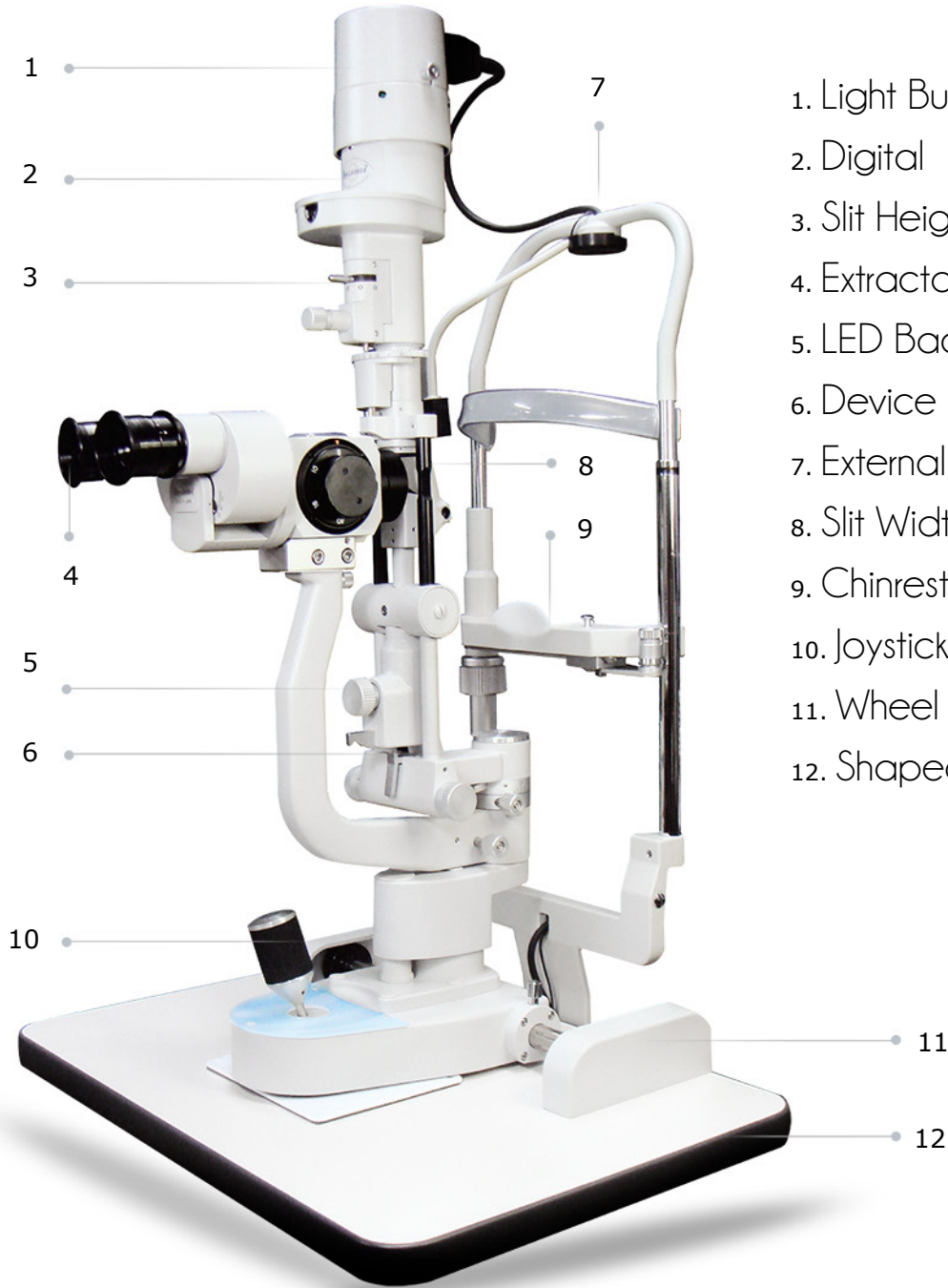
MADE  JAPAN





Halogen & LED Series

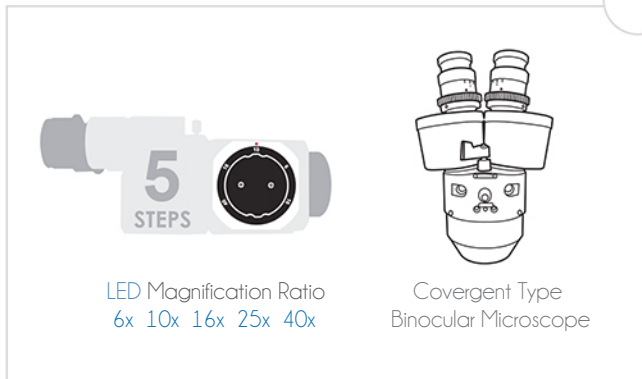
L-0189



1. Light Bulb / LED or Halogen Cover
2. Digital Video Camera Splitter
3. Slit Height Adjuster / Tuner
4. Extractable Microscope
5. LED Background Illumination
6. Device Base Locking Knob
7. External LED Fixation Target
8. Slit Width Adjusting Knobs
9. Chinrest
10. Joystick (Camera Freeze & Capture)
11. Wheel Shields
12. Shaped Tabletop

Features:

- The ergonomic design of L-0189 provides a clear and detailed illumination and observations for patients eye.
- The L-0189 takes fine and crisp images with high quality sensor and simple connection system of USB. (Optional)
- Energy saving light source generates no UV and less heat.
- L-0189 digital camera is compatible with Slit Lamps Microscopes "EGG" and beam splitter L-0541DC
- The unique function of "SI GRANDE" enables you to optically change the illumination field up to 10mm.
- All extended functions are thoroughly designed for comfort.



Halogen & LED Series

L-0189

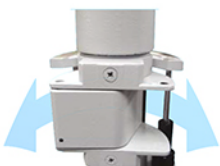
Product Introduction



L-0189 Features the LED background illumination system which allows you to take clear and bright images of slit light. Slit Lamps also available with halogens.



L-0189 Spectrum is specially designed to ensure the best setting for various kinds of slit lamps observation.



L-0189 Enables you to optically change the illumination field up to 10mm by single click actions. This ideal for contact lens fitting observation.



Continuous light volume controller for fine adjustment with the Joy-stick features and illumination switches.



Convergent optics for user's comfort usage while still images and videos can be taken adequately in place.



Halogen Light boosters for momentary extra brightness and in addition to the external LED background illumination.



Video camera beam splitter which can be attached with the Sony progressive 6 camera setting.



Built in yellow filter for clearer view and photography of blood.

MADE **IN** JAPAN



Halogen & LED Series
L-0189

Product Specifications

Measurements

Microscope Head Type	Convergent Type Binocular Microscope
Magnification Changer	5 Steps by Drum Rotation
Stereo Angle	12°
Magnification Ratio (Field of View)	6x (38mm) 10x (24mm) 16x (15mm) 25x (9mm) 40x (6mm)
Dimensions	LED: 550 (W) x 400 (D) x 660 (H) mm Halogen: 550 (W) x 400 (D) x 690 (H) mm
Weight	18.5kgs
Base Movement	Vertical: 30mm Longitudinal 79 Lateral: 115mm
Pupillary Adjustment	53 - 83mm
Focus Distance	106mm

Slit Illumination

Light Source	LED: (White) 14VDC 1A Halogen: Lamp Bulb 12V/50W (L016H1)
Background Illumination	14VDC 0.1A
Slit Width	0-10mm
Aperture Diameter	0.2, 1, 3, 4, 6, 10mm
Slit Length	0-10mm
Filters	Cobalt Blue, Heat Absorption, Red-Free, 1/2 ND
Slit Rotation	±90°
Slit Inclination	0° - 5° - 10° - 15° - 20°
Max Intensity	45,000 Lux

Notes

Image Sensor Type	Sony Progressive Scan
Resolution	1280 (H) x 960 (V)
Pixel Size	3.75µm x 3.75µm
Chinrest Vertical Movement	75mm
Power Consumption	LED: 25VA & Halogen: 65VA